



e **FACT** BOOK
2009 - 2010



GRAMBLING
STATE UNIVERSITY
WHERE EVERYBODY IS SOMEBODY

GRAMBLING STATE UNIVERSITY FACT BOOK

Table of Contents

Foreword and Acknowledgement.....	iii
-----------------------------------	-----

I. INSTITUTIONAL PROFILE

University Governance Organizations & Administration	2
ULS Board Members	3
GSU Administration	4
Organizational Structure	5
Accrediting Agencies	6
Historical Notes	7
GSU Alumni Hall of Fame, Gallery of Distinction	8
Peer Institutions	9
Comparison of Grambling State University to Peers-Crime Statistics	10

II. STUDENT PROFILE

A. First-Time Freshmen

Applicants, Admits, and Enrollees	12
Admission Test Scores	14

B. Enrollment Information

Headcount Enrollment Trend by Level	15
Headcount Enrollment Trend by Ethnicity	16
Headcount Enrollment by Gender	17
Headcount Enrollment by Classification	18
Headcount Enrollment by Status	19

Headcount Enrollment by Age	20
Enrollment by Country	22
Enrollment by State	23
Headcount Enrollment by Louisiana Parish	24
Headcount Enrollment by Student Residency	26
Full-Time Equivalent Enrollment (FTE) by Level	27

C. Progression and Graduation

First-to-Second Year Retention Rates	28
Six-Year Graduation Rates	29
Degrees Awarded by Level and Gender	30
Degrees Awarded by Level of Degree and Race	31
Degrees Awarded by Level and Program	32

III. RESOURCES

A. Employees

Full-Time Staff by Ethnicity and Gender	36
Full-Time Instructional Faculty by Gender	37
Full-Time Instructional Faculty by Rank	38
Average Salary of Full-Time Faculty by Rank	39
Full-Time Instructional Faculty by Tenure Status	40

B. Finances

Student Fees-Cost of Attendance	41
Revenues and Other Additions by Source of Funds	42
Education & General Expenditures by Function	43

C. Facilities

Assignable Area by Room Use	44
-----------------------------------	----

FOREWORD AND ACKNOWLEDGEMENT

This is the fourth edition of the Grambling State University *eFact Book* developed by the Office of Planning and Institutional Research (PaIR). This document provides five-year statistical trend information presented in tables and graphs as well as other information provided for the most current year available. The Office of PaIR collects, compiles, and disseminates information on all facets of the University on a continuous basis. This publication provides a wealth of information about the University and is designed to give University constituents and external reporting agencies easy access to statistical data pertaining to the institution.

The concerted effort of the PaIR staff is to make this publication a useful resource for retrieving University information by using an online medium. The staff wishes to thank all of the offices and individual persons on campus who contributed information and suggestions towards the first *eFact Book* at Grambling State University. Special thanks and appreciation goes to Mr. Bruce Morgan, Grambling State University's Webmaster, for his contributions.



GSU

Section I

INSTITUTIONAL PROFILE

University of Louisiana System
Board of Supervisors Officers

Winfred Sibille Chair
Wayne Parker Vice Chair
Russell Mosely Parliamentarian

Board Members

Paul Aucoin	Andre Coudrain	Edward J. Crawford, III
Dr. Mildred Gallot	Elsie Burkhalter	E. Gerald Herbert
Jeff Jenkins	Renee Lapeyrolerie	Jimmy Long, Sr.
Carl Shetler	Steven Jackson	

Grambling State University
Current Administration

Interim President Dr. Frank Pogue
Interim Provost and Vice President for Academic Affairs Dr. Connie Walton-Clement
Interim Dean, College of Arts & Science Dr. Evelyn Winn
Dean, College of Business Dr. Carl Wright
Dean, College of Education Dr. Wynetta Lee
Acting Dean, College of Professional Studies Dr. Rama Tunuguntla
Associate Vice President for Research
and Dean of the Graduate School Dr. Janet Guyden
Vice President for Student Affairs Dr. Stacey Duhon
Vice President for Finance Mr. Daarel E. Burnette



Winfred Sibille
Chair



Wayne Parker
Vice Chair



Russell Mosely
Parliamentarian



Steven Jackson
Student Member
Grambling State



Paul
Aucoin



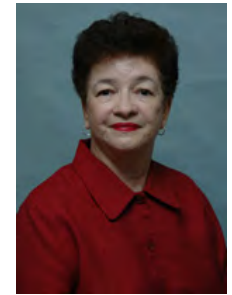
Elise
Burkhalter



Andre
Courdrain



Edward J.
Crawford III



Mildred
Gallot



E. Gerald
Herbert



Jeff
Jenkins



Renee
Lapeyrolerie



Jimmy
Long, Sr



Carl
Shetler

Grambling State University Administration

Frank Pogue
Interim President



Stacey Duhon
Vice President of
Student Affairs



Connie Walton
Interim Provost and
Vice President of Aca-
demic Affairs



Daarel Burnette
Vice President of
Finance

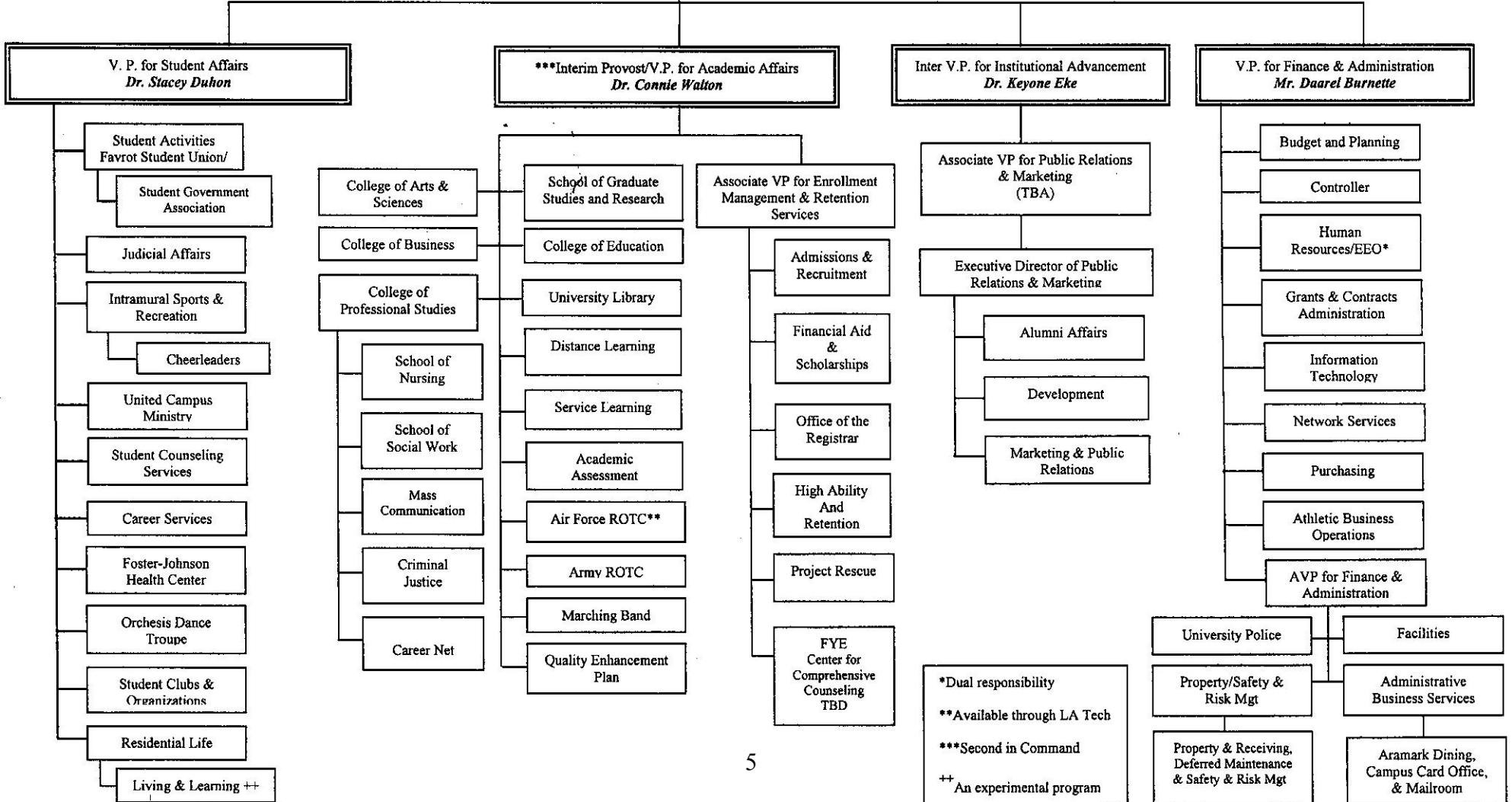
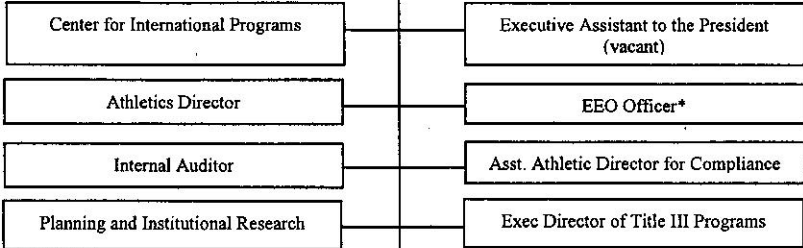
Organizational Chart

Rev 4/15/10



ULS Board of Supervisors

Interim President
Dr. Frank Pogue



*Dual responsibility
 **Available through LA Tech
 ***Second in Command
 ++ An experimental program

GRAMBLING STATE UNIVERSITY

is accredited by, approved by, or holds membership in the following associations.

College/School/Department	Accrediting Agencies
COLLEGE OF ARTS & SCIENCES	
Art	National Association of Schools of Art and Design (membership only)
Applied Music-Performance	National Association of Schools of Music (NASM)
Chemistry	American Chemical Society (ACS)
Computer Science	Accreditation Board for Engineering and Technology
Drafting Design Technology	Accreditation Board for Engineering and Technology
Electronics Engineering Technology	Accreditation Board for Engineering and Technology
Theatre	National Association of Schools of Theatre (NAST)
COLLEGE OF BUSINESS	
Accounting	AACSB: The International Association for Management Education
Computer Information Systems	AACSB: The International Association for Management Education
Economics	AACSB: The International Association for Management Education
Management	AACSB: The International Association for Management Education
Marketing	AACSB: The International Association for Management Education
COLLEGE OF EDUCATION	
Curriculum and Instruction	National Council for Accreditation of Teacher Education (NCATE)
Developmental Education	National Council for Accreditation of Teacher Education (NCATE)
Early Childhood Education	National Council for Accreditation of Teacher Education (NCATE)
Elementary Education	National Council for Accreditation of Teacher Education (NCATE)
Educational Leadership	National Council for Accreditation of Teacher Education (NCATE)
Leisure Studies (Kinesiology)	National Recreation and Park Association (NRPA)
Middle School Education-English & Mathematics	National Council for Accreditation of Teacher Education (NCATE)
Special Education/Special Education (Mild/Moderate)	National Council for Accreditation of Teacher Education (NCATE)
Teacher Education Programs	National Council for Accreditation of Teacher Education (NCATE)
COLLEGE OF PROFESSIONAL STUDIES	
Mass Communication	Accrediting Council on Education in Journalism and Mass Communication (ACEJMC)
Public Administration	National Association of Schools of Public Affairs and Administration (NASPAA)
School of Nursing	National League for Nursing Accrediting Commission (NLN)
School of Social Work	Council on Social Work Education (SWE)
University	Southern Association of Colleges and Schools (SACS)

HISTORICAL NOTES

Presidents

Charles P. Adams	1907-1936
Ralph W.E. Jones	1936-1977
Dr. Joseph B. Johnson	1977-1991
Dr. Harold W. Lundy	1991-1994
Dr. Raymond H. Hicks	1994-1997
Dr. Leonard L. Haynes (Interim)	1997-1998
Dr. Steve A. Favors	1998-2001
Dr. Neari F. Warner (Acting)	2001-2004
Dr. Horace A. Judson	2004-2009
Dr. Frank G. Pogue (Interim)	2010

Highlights

- 1901 Founded by Charles P. Adams who became the first President; the Institution was first known as The Colored Industrial and Agricultural School and was supported by private donations
- 1912 Became a Quasi-Public School
- 1918 Name changed to Lincoln Parish Training School under the direction of Lincoln Parish School Board
- 1928 Became a state junior college; name changed to Louisiana Negro Normal and Industrial Institute
- 1939 A three-year professional certificate was awarded
- 1940 A four-year degree program was inaugurated
- 1944 First Bachelor of Science degree in Elementary Education was granted
- 1946 Name changed to Grambling College of Louisiana
- 1948 Secondary Education was inaugurated
- 1953 Received initial accreditation from the Southern Association of Colleges and Schools (SACS)
- 1958 Liberal Arts Program was inaugurated; obtained full membership in SACS
- 1962 Attained accreditation from National Council of Accreditation for Teacher Education (NCATE)
- 1974 Name changed to Grambling State University; Graduate School was inaugurated
- 1997 Eddie Robinson, Sr. earned the title of "Winningest Collegiate Football Coach" with 324 victories in 1985, ended his career with 408 wins.
- 2000 Ranked first among the nation's colleges and universities in awarding four-year degrees in computer science to African American students
- 2003 Achieved 100% accreditation of the State's mandatory degree programs.

GSU Alumni Hall of Fame Honorees

Grambling State University Alumni are recognized nationally and internationally as exceptional individuals performing or having performed, extraordinary feats within and beyond their areas of study and practice. These graduates are celebrated by bestowing them with the honor of induction in their “rightful place,” The Grambling State University **Hall of Fame, Gallery of Distinction**.

The Grambling State University **Hall of Fame** was initially started in 1980, under the administration of Dr. Joseph B. Johnson and was dormant since 1996. Restoring the **Hall of Fame** is consistent with President Horace Judson’s mission of “Reclaiming Our Legacy and Claiming Our Place.”

The **Gallery of Distinction**, authorized by the current administration, resides in a select location within the buildings of each of the academic colleges and schools. Photographs of these greats are represented by class graduation dates and induction years.

[Alumni Hall of Fame Gallery of Distinction](#)

[Fall 2008 Hall of Fame Inductees](#)

Grambling State University's Peer Institutions

UNIVERSITY	WEBSITE
Albany State University	http://asuweb.asurams.edu/asu/
Alcorn State University	http://www.alcorn.edu
Delaware State University	http://www.desu.edu/
Delta State University	http://www.deltastate.edu/pages/1.asp
Elizabeth City State University	http://www.ecsu.edu/
Fayetteville State University	http://www.uncfsu.edu/
Fort Valley State University	http://www.fvsu.edu/
Jacksonville State University	http://www.jsu.edu/
Mississippi Valley State	http://www.mvsu.edu
Norfolk State University	http://www.nsu.edu/
North Carolina Central University	http://www.nccu.edu
Northeastern State University	http://www.nsuok.edu/
Northwestern State University	http://www.nsula.edu
Savannah State University	http://www.savstate.edu/
South Carolina State University	http://www.scsu.edu
Virginia State University	http://www.vsu.edu

2008 CRIME STATISTICS BY OFFENSE
Comparison of Grambling State University to Peers
Ranked in Order of Total Crimes

INSTITUTIONS	Student Enrollment	Violent Crime	Murder & Non-Negligant Manslaughter	Forcible Rape	Robbery	Aggravated Assault	Property Crime	Burglary	Larceny-Theft	Motor Vehicle Theft	Arson	Total
Delaware State University	3,756	7	0	2	2	3	75	41	34	0	0	164
Angelo State University	6,239	2	0	1	0	1	63	2	58	3	0	130
Grambling State University	5,161	23	0	1	13	9	150	75	71	4	0	346
McNeese State University	8,095	1	0	0	1	0	49	1	45	3	0	100
University of Louisiana at Monroe	8,541	3	0	0	1	2	142	11	128	3	0	290
Fayetteville State University	6,692	4	0	0	3	1	164	13	146	5	0	336
Virginia State University	4,720	14	0	0	4	10	191	4	182	5	0	410
Norfolk State University	6,155	17	0	2	11	4	176	41	125	10	4	390
Texas Southern University	9,540	11	0	1	4	6	239	69	154	16	1	501

Source: <http://www.fbi.gov> - The official site of the U.S. Federal Bureau of Investigation.



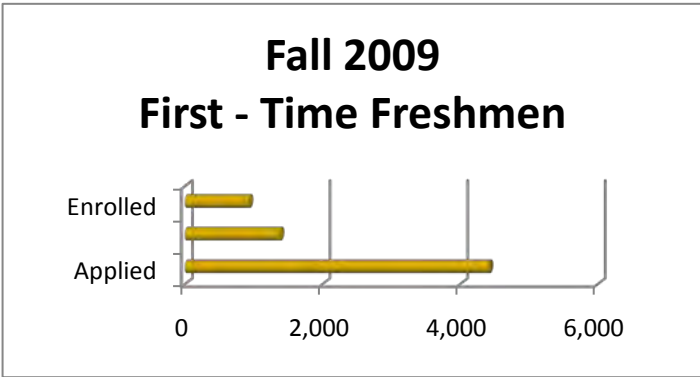
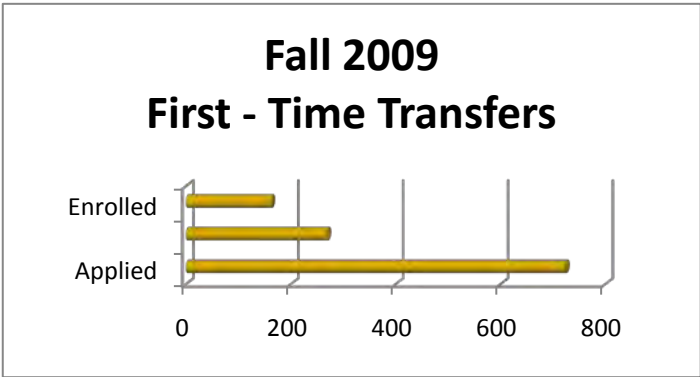
GSU

Section II

STUDENT PROFILE

- A. First-Time Freshmen
- B. Enrollment Information
- C. Progression and Graduation

**Number of Students Applying, Admitted and Enrolled
First-time Freshmen and First-time Transfers**



First-time Transfers Applied, Admitted, Enrolled				
Semester	Applied	Admitted	Enrolled	Yield of Admitted to Enrolled
Fall 2009	724	269	162	60.2%

First-time Freshmen Applied, Admitted, Enrolled				
Semester	Applied	Admitted	Enrolled	Yield of Admitted to Enrolled
Fall 2009	4,419	1,381	931	67.4%

Source: GSU Office of Admissions and Statewide Student Profile System

Number of Students Applying, Admitted and Enrolled First-time Freshmen and First-time Transfers

First-time Freshmen Applied, Admitted, Enrolled

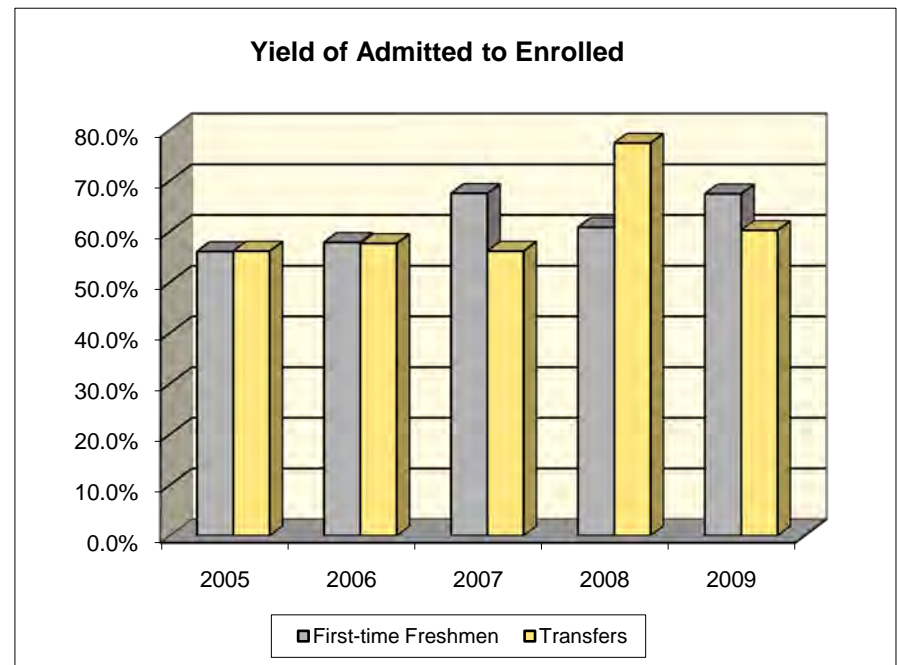
Semester	Applied	Admitted	Enrolled	Yield of Admitted to Enrolled
Fall 2005	4,460	2,065	1,157	56.0%
Fall 2006	4,630	1,975	1,142	57.8%
Fall 2007	5,957	1,793	1,210	67.5%
Fall 2008	6,075	2,000	1,215	60.8%
Fall 2009	4,419	1,381	931	67.4%

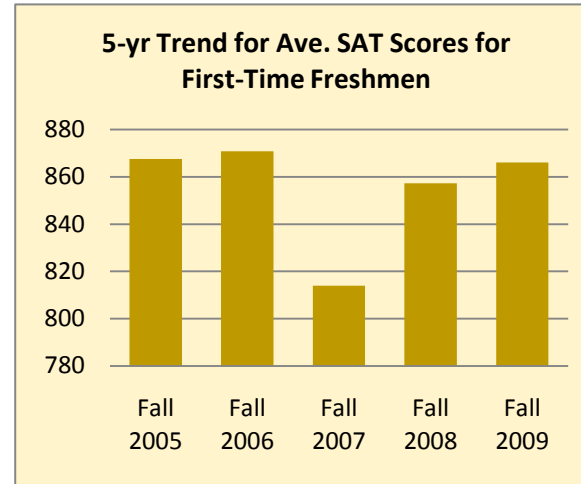
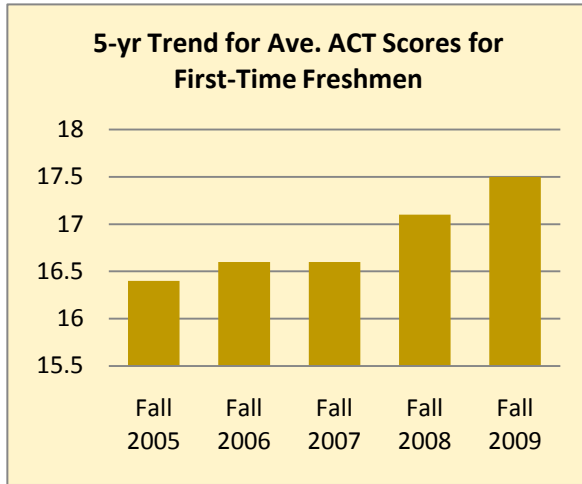
Source: GSU Office of Admissions and Statewide Student Profile System

First-time Transfers Applied, Admitted, Enrolled

Semester	Applied	Admitted	Enrolled	Yield of Admitted to Enrolled
Fall 2005	613	385	216	56.1%
Fall 2006	654	368	212	57.6%
Fall 2007	932	383	215	56.1%
Fall 2008	689	252	195	77.4%
Fall 2009	724	269	162	60.2%

Source: GSU Office of Admissions and Statewide Student Profile System

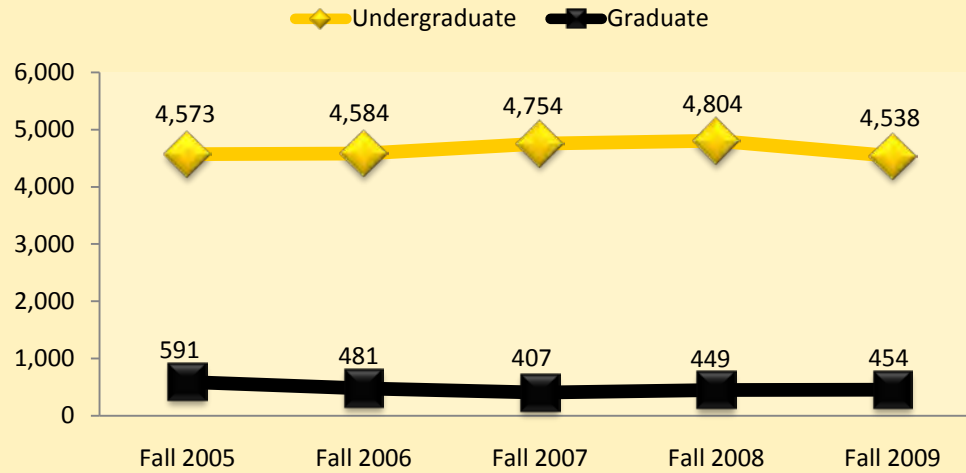




Average ACT and SAT Scores for First time Full Time Freshmen		
Semester	ACT	SAT
Fall 2005	16.4	867.55
Fall 2006	16.6	870.80
Fall 2007	16.6	813.92
Fall 2008	17.1	857.27
Fall 2009	17.5	866.11
<i>Sources: ACT Profiles and University data system</i>		

Headcount Enrollment

5-Year Trend for Headcount Enrollment by Student Level



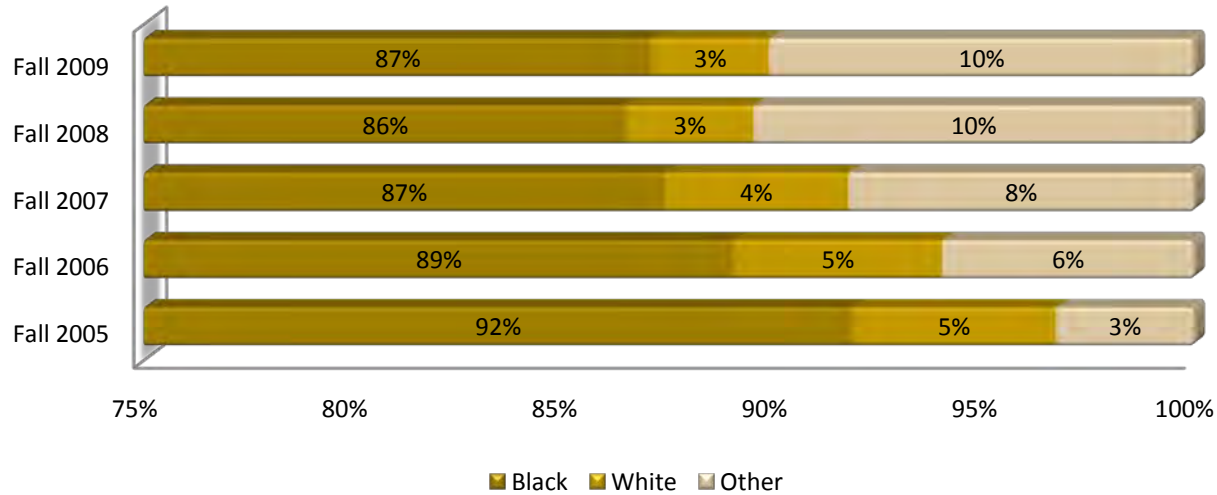
Headcount Enrollment Trend by Level

	Undergraduate	Graduate	Total	Percent Undergraduate
Fall 2005	4,573	591	5,164	88.6%
Fall 2006	4,584	481	5,065	90.5%
Fall 2007	4,754	407	5,161	92.1%
Fall 2008	4,804	449	5,253	91.5%
Fall 2009	4,538	454	4,992	90.9%

Source: Statewide Student Profile System

Headcount Enrollment

5-Year Percentage for Headcount Enrollment Trend by Ethnicity per Fall Semester

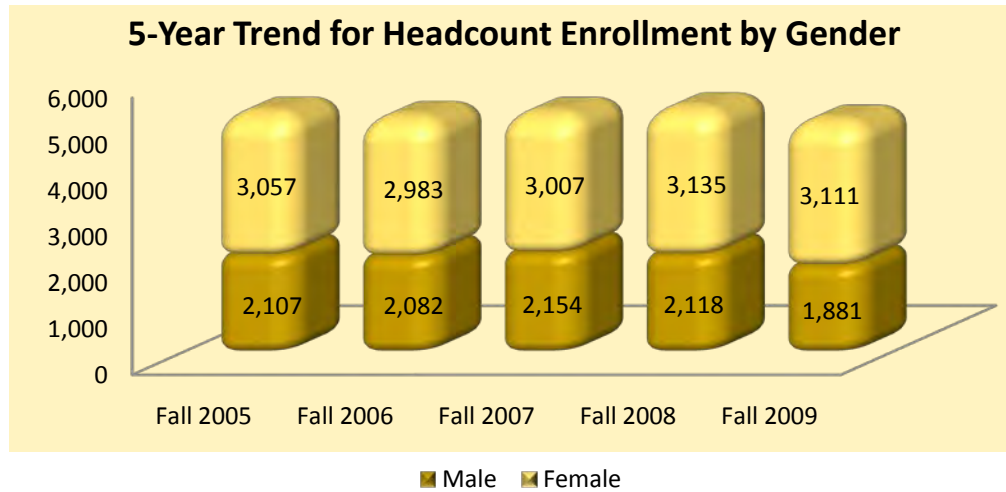


Headcount Enrollment Trend by Ethnicity

Semester	Non-Resident Alien	Black, Non-Hispanic	American Indian/Alaskan Native	Asian or Pacific Islander	Hispanic	White, Non-Hispanic	Unknown	Total
Fall 2005	82	4,744	9	17	18	250	44	5,164
Fall 2006	203	4,510	14	26	16	251	45	5,065
Fall 2007	338	4,510	9	24	17	226	37	5,161
Fall 2008	497	4,543	11	16	16	159	11	5,253
Fall 2009	447	4,347	12	15	17	140	14	4,992

Source: Statewide Student Profile System

Headcount Enrollment

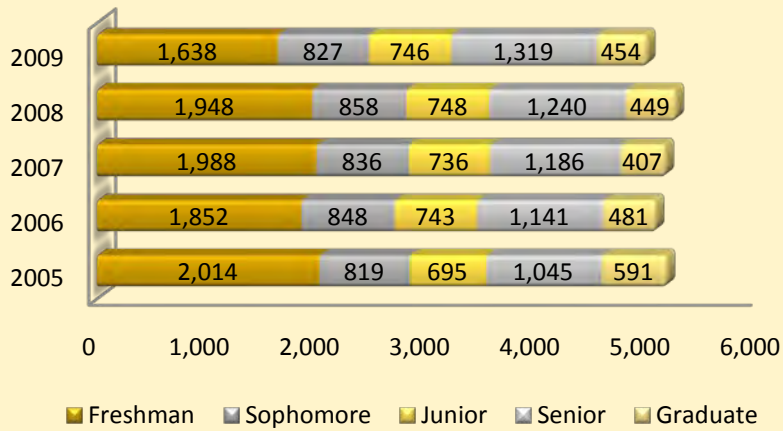


Headcount Enrollment by Gender				
	Male	Female	Total	% Male
Fall 2005	2,107	3,057	5,164	41%
Fall 2006	2,082	2,983	5,065	41%
Fall 2007	2,154	3,007	5,161	42%
Fall 2008	2,118	3,135	5,253	40%
Fall 2009	1,881	3,111	4,992	38%

Source: Statewide Student Profile System

Headcount Enrollment

5-Year Trend for Headcount Enrollment by Student Classification



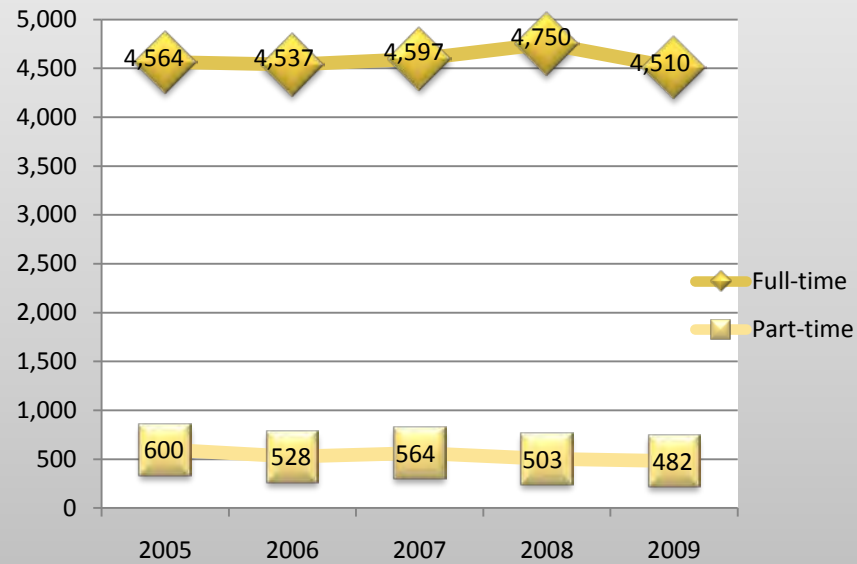
5-Year Trend for Headcount Enrollment by Classification

	2005	2006	2007	2008	2009
Preparatory	x	x	8	10	8
Freshman	2,014	1,852	1,988	1,948	1,638
Sophomore	819	848	836	858	827
Junior	695	743	736	748	746
Senior	1,045	1,141	1,186	1,240	1,319
Graduate	591	481	407	449	454
Total	5,164	5,065	5,161	5,253	4,992

Source: Statewide Student Profile System

Headcount Enrollment

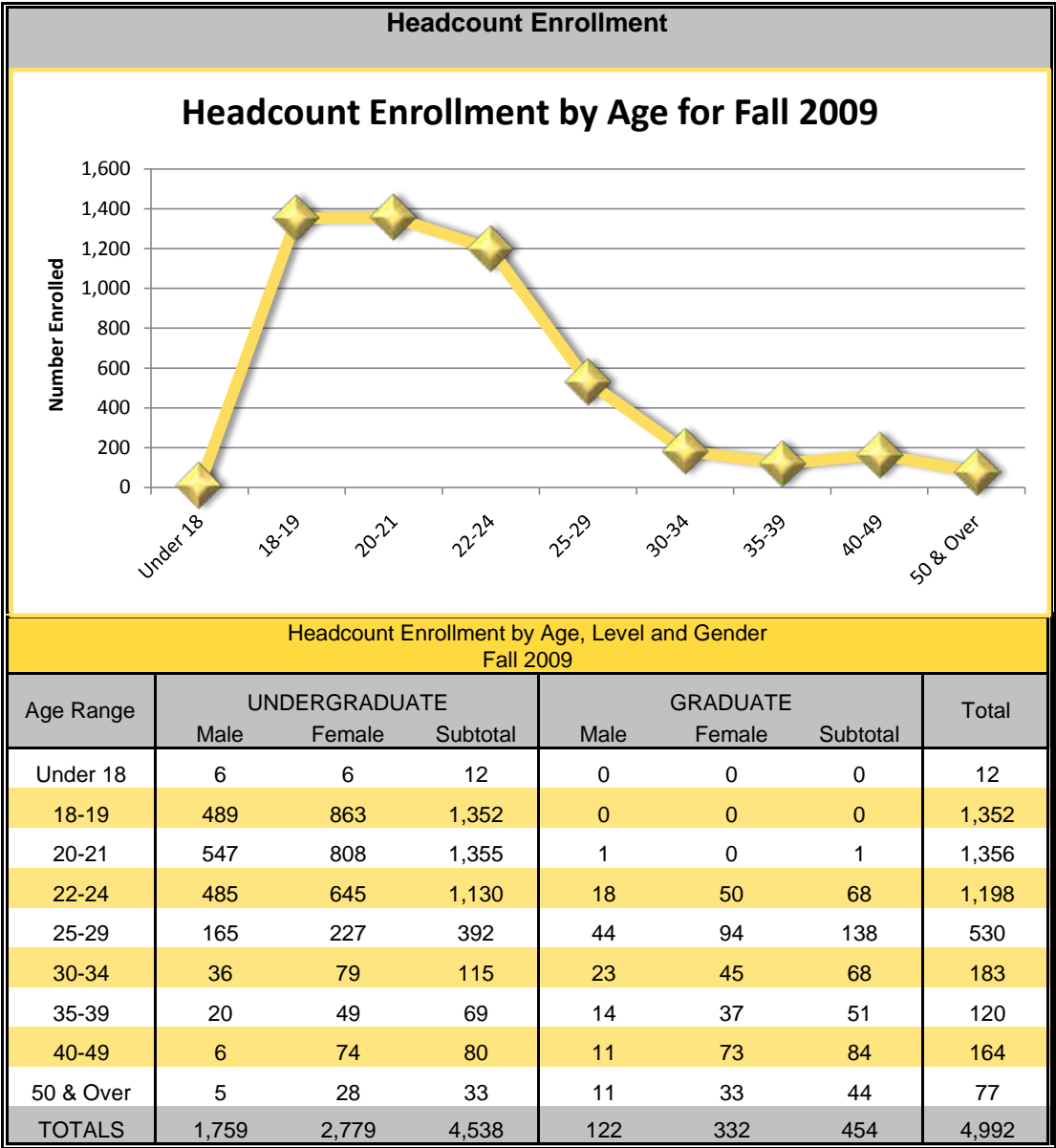
5-Year Trend for Headcount Enrollment by Full- and Part-time Student Status



Headcount Enrollment by Status

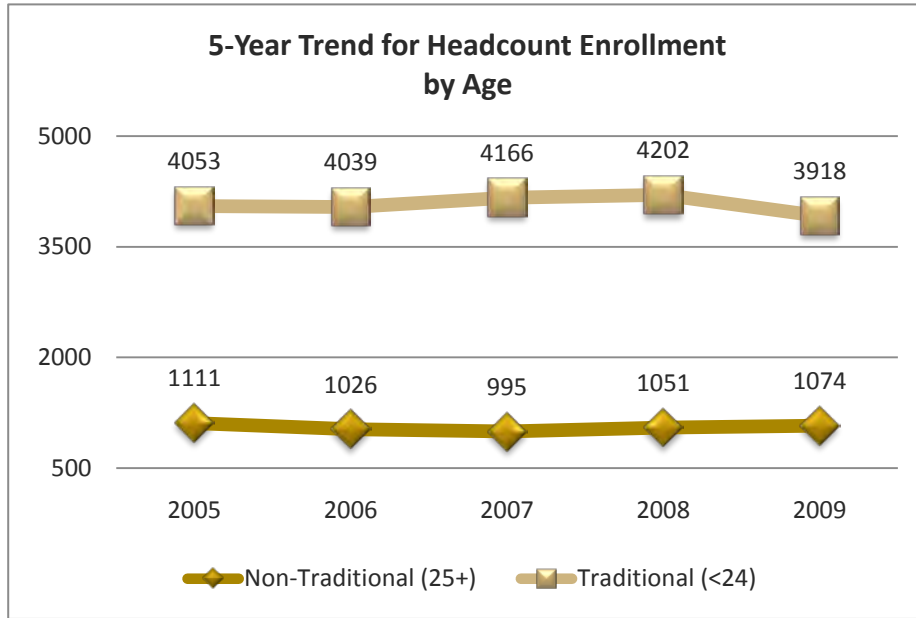
Fall Semester	Full-time	Part-time	Total	Percent Part-time
Fall 2005	4,564	600	5,164	11.6%
Fall 2006	4,537	528	5,065	10.4%
Fall 2007	4,597	564	5,161	10.9%
Fall 2008	4,750	503	5,253	9.6%
Fall 2009	4,510	482	4,992	9.7%

Source: Statewide Student Profile System



Source: Statewide Student Profile System

Headcount Enrollment



Headcount Enrollment by Age 5-yr Trend					
	2005	2006	2007	2008	2009
Under 18	19	14	25	17	12
18-19	1,538	1,438	1,570	1,624	1,352
20-21	1,447	1,465	1,413	1,359	1,356
22-24	1,049	1,122	1,158	1,202	1,198
25-29	465	478	486	488	530
30-34	205	195	176	180	183
35-39	126	109	106	122	120
40-49	213	163	142	165	164
50 & Over	102	81	85	96	77
Mean Age	23.39	23.09	22.87	23.10	23.28
TOTALS	5,164	5,065	5,161	5,253	4,992

Source: Statewide Student Profile System

Enrollment by Country Fall 2009			
Country	Gender		Totals
	Male	Female	
Antigua	6	16	22
Armenia	0	1	1
Bahamas	0	1	1
Barbados	1	1	2
Belize	2	0	2
Bulgaria	1	1	2
Burundi	2	0	2
Cambodia	3	0	3
Cameroon	11	26	37
Canada	3	2	5
China	0	2	2
Dominica	17	43	60
Egypt	0	1	1
France	1	0	1
Gabon	1	0	1
Gambia	1	0	1
Jamaica	6	8	14
Kenya	7	10	17
Kyrgyzstan	0	1	1
Lebanon	1	0	1
Mexico	1	0	1
Nepal	26	7	33
Nigeria	7	5	12
Poland	0	1	1
Russia	1	1	2
Rwanda	0	3	3
Saudi Arabia	3	1	4
South Africa	0	1	1
Sri Lanka	0	1	1
St. Kitts and Nevis	0	1	1
St. Lucia	68	127	195
Syria	0	1	1
Tanzania	1	0	1
Thailand	0	3	3
Trinidad and Tobago	3	3	6
Turkey	2	0	2
Turkmenistan	0	1	1
Uganda	2	3	5
Zimbabwe	1	1	2
Foreign Totals			
	178	273	451
Out-of-state Totals			
	725	1,079	1,804
Louisiana Totals			
	978	1,759	2,737
Institution Totals			
	1,881	3,111	4,992

Source: Statewide Student Profile System

**Enrollment by State
Fall 2009**

State	Gender		Totals
	Male	Female	
Alabama	35	25	60
Alaska	2	5	7
Arizona	3	9	12
Arkansas	36	41	77
California	101	172	273
Colorado	6	11	17
Connecticut	1	2	3
Delaware	1	1	2
District of Columbia	3	4	7
Florida	47	36	83
Georgia	39	56	95
Illinois	53	108	161
Indiana	11	15	26
Iowa	1	3	4
Kansas	6	3	9
Kentucky	2	1	3
Maryland	20	21	41
Massachusetts	1	2	3
Michigan	30	42	72
Minnesota	1	10	11
Mississippi	28	40	68
Missouri	13	22	35
Nebraska	0	1	1
Nevada	8	13	21
New Jersey	6	4	10
New Mexico	1	2	3
New York	13	9	22
North Carolina	7	8	15
North Dakota	0	1	1
Ohio	11	20	31
Oklahoma	7	9	16
Oregon	3	8	11
Pennsylvania	3	5	8
South Carolina	10	3	13
Tennessee	8	14	22
Texas	182	313	495
Utah	0	2	2
Virginia	9	12	21
Virgin Islands	0	1	1
Washington	4	12	16
West Virginia	0	1	1
Wisconsin	11	11	22
Unknown	2	1	3
Out-of-state Totals	725	1,079	1,801
Louisiana Totals	978	1,759	2,737
Foreign Totals	178	273	451
Institution Totals	1,881	3,111	4,992

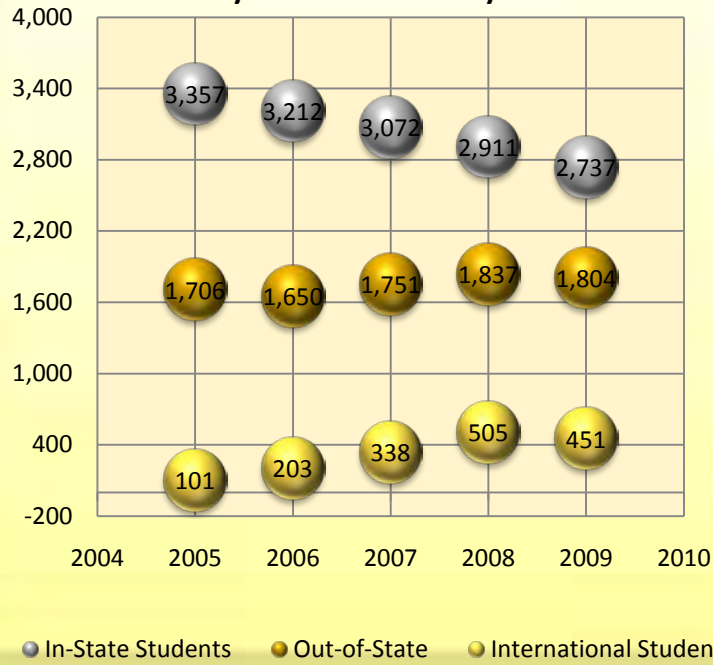
Headcount Enrollment by Parish					
Parish	Fall '05	Fall '06	Fall '07	Fall '08	Fall '09
Acadia	11	16	14	11	8
Allen	11	10	9	6	5
Ascension	7	9	11	7	6
Assumption	6	8	8	10	7
Avoyelles	23	16	13	13	9
Beauregard	12	7	7	8	6
Bienville	119	139	122	130	143
Bossier	54	52	57	53	45
Caddo	334	292	264	288	294
Calcasieu	26	32	22	21	28
Caldwell	9	4	3	7	7
Catahoula	9	7	10	8	6
Claiborne	85	89	75	59	62
Concordia	34	32	37	34	30
De Soto	36	30	46	36	35
East Baton Rouge	58	78	61	58	48
East Carroll	101	74	72	58	45
East Feliciana	12	16	12	11	6
Evangeline	11	15	10	12	9
Franklin	35	42	37	32	38
Grant	5	5	3	2	1
Iberia	16	12	11	10	15
Iberville	13	12	8	11	13
Jackson	104	115	103	104	102
Jefferson	53	46	62	51	45
Jefferson Davis	7	11	11	10	11
Lafayette	15	24	27	25	28
Lafourche	2	2	2	4	3
La Salle	4	4	5	3	2
Lincoln	861	692	641	531	509
Livingston	1	0	1		
Madison	66	64	68	79	78
Morehouse	83	76	87	113	84
Natchitoches	29	35	18	21	20
Orleans	154	132	134	111	108
Ouachita	433	474	474	444	385
Plaquemines	6	3	3	6	5
Ponte Coupee	1	1	2	1	1
Rapides	68	68	62	80	75
Red River	5	0	1	5	3
Richland	47	53	49	38	29
Sabine	7	4	5	7	6
St. Bernard	5	1	2	3	2

Headcount Enrollment by Parish					
Parish	Fall '05	Fall '06	Fall '07	Fall '08	Fall '09
St. Charles	8	8	7	6	9
St. Helena	7	2	1	2	3
St. James	8	4	3	2	3
St. John	10	19	21	18	17
St. Landry	34	43	40	32	24
St. Martin	6	7	7	6	7
St. Mary	2	8	10	12	8
St. Tammany	12	8	12	15	14
Tangipahoa	14	11	21	22	19
Tensas	20	9	17	19	24
Terrebonne	12	14	10	12	12
Union	73	65	70	59	55
Vermillion	5	9	8	5	5
Vernon	8	13	7	8	9
Washington	8	17	24	27	26
Webster	97	108	98	105	98
West Baton Rouge	3	7	9	6	7
West Carroll	17	17	8	11	8
West Feliciana	5	5	2	1	4
Winn	30	36	28	22	23
LOUISIANA TOTAL	3,357	3,212	3,072	2,911	2,737
OUT-OF-STATE TOTAL	1706	1650	1751	1837	1804
FOREIGN TOTAL	101	203	338	505	451
TOTAL STUDENTS	5164	5065	5161	5253	4992

Source: Statewide Student Profile System

Headcount Enrollment

5-Year Trend for Headcount Enrollment by Student Residency



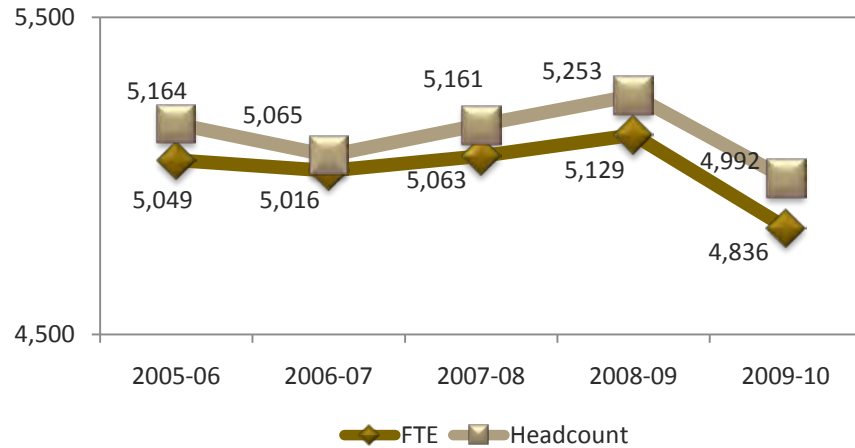
Headcount Enrollment by Residency 5-Year Trend

	2005	2006	2007	2008	2009
In-State Students	3,357	3,212	3,072	2,911	2,737
Out-of-State	1,706	1,650	1,751	1,837	1,804
International Students	101	203	338	505	451
TOTALS	5,164	5,065	5,161	5,253	4,992

Source: Statewide Student Profile System

Enrollment Trends by Level

5-Year Trend Comparison of FTE and Headcount Enrollment

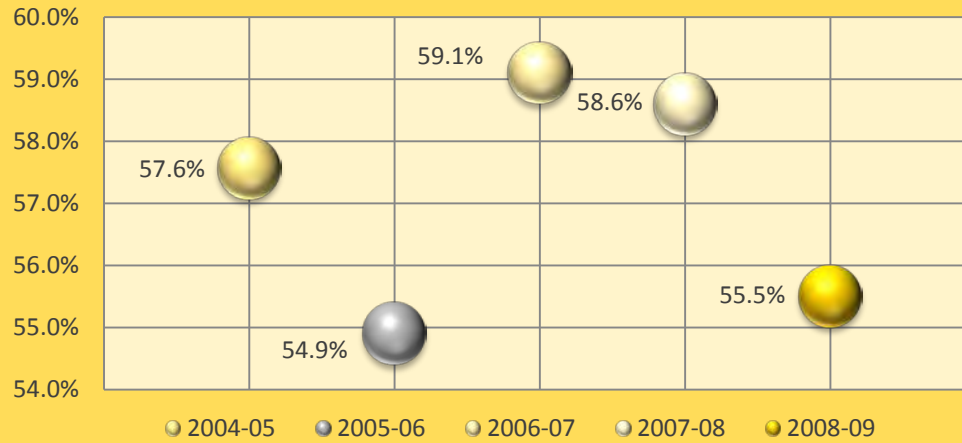


**Full-time Equivalent Enrollment (FTE)
by Level**

LEVEL	Fall Semester				
	2005	2006	2007	2008	2009
Undergraduate	4,550.43	4,585.83	4,732.10	4,751.46	4,440.63
Graduate	498.75	430.25	330.83	377.32	395.50
Total FTE	5,049.18	5,016.08	5,062.93	5,128.78	4,836.13

Source: Statewide Student Profile System

5-Year Trend of First-to-Second Year Retention Rates



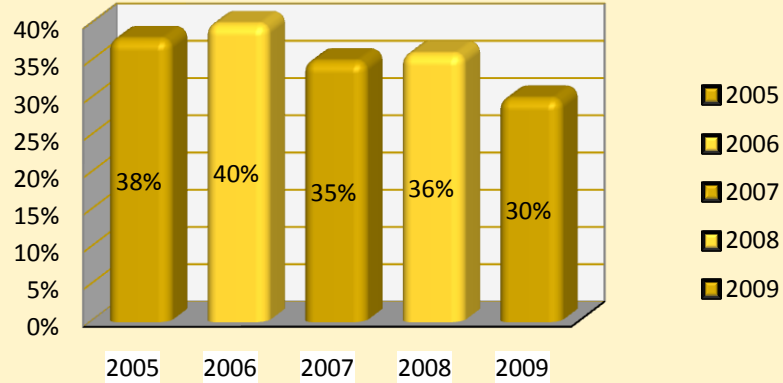
First-to-Second Year Retention Rates

Semester	First-time Full-time Freshmen Entering	Number Returning	Retention Rate
Fall 2004 to Fall 2005	1169	673	57.6%
Fall 2005 to Fall 2006	1131	621	54.9%
Fall 2006 to Fall 2007	1122	663	59.1%
Fall 2007 to Fall 2008	1184	694	58.6%
Fall 2008 to Fall 2009	1203	668	55.5%

Source: Board of Regents

GRADUATION RATES

5-Year Trend of Six-Year Graduation Rates



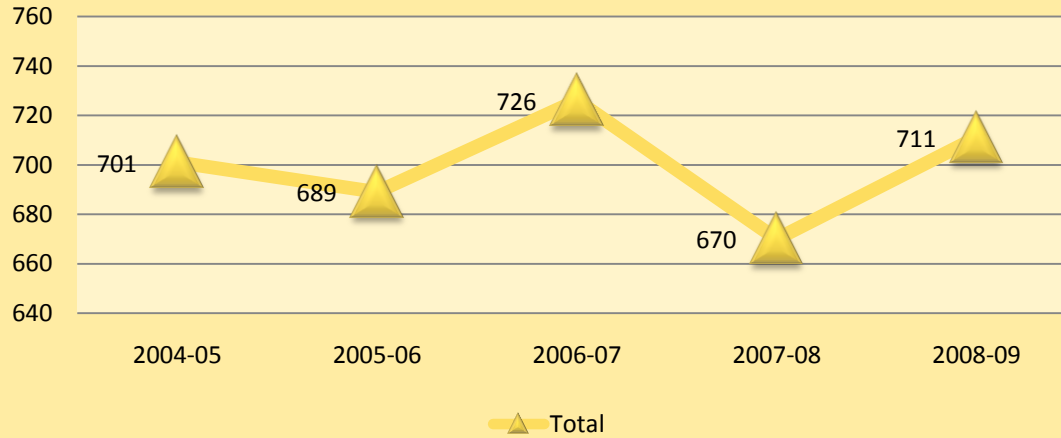
Six-Year Graduation Rates

Entering Term	First-time Full-time Cohort	Number Graduating	Graduation Rate
1999	690	260	37.68%
2000	908	361	39.76%
2001	886	313	35.33%
2002	851	304	35.72%
2003	1,027	307	29.89%

Source: Board of Regents

DEGREES AWARDED

5-Year Trend for Total Degrees Awarded



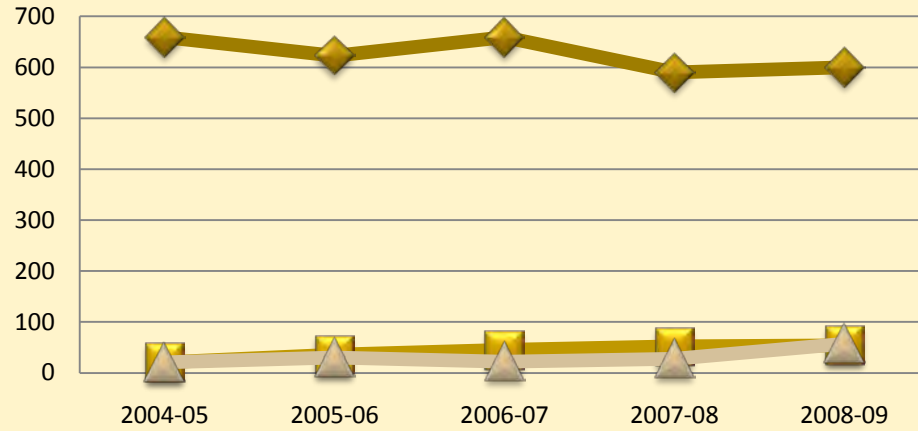
Degrees Awarded by Level and Gender

Level	Gender	2004-05	2005-06	2006-07	2007-08	2008-09
Undergraduate	Female	374	324	351	342	388
	Male	191	196	202	232	199
	Subtotal	565	520	553	574	587
Graduate	Female	98	124	130	67	94
	Male	38	45	43	29	30
	Subtotal	136	169	173	96	124
TOTALS	Female	472	448	481	409	482
	Male	229	241	245	261	229
	Total	701	689	726	670	711

Source: Statewide Student Profile System

DEGREES AWARDED by RACE

5yr Trend for Degrees Awarded by Race



Degrees Awarded by Race

Race	2004-05	2005-06	2006-07	2007-08	2008-09
Black	659	623	659	590	600
White	21	36	45	52	54
Other	21	30	22	28	57
Total	701	689	726	670	711

Source: Statewide Student Profile System

5-Year Trend in Degrees Awarded by Level & Program

DEGREES	DESCRIPTION	2004-2005	2005-2006	2006-2007	2007-2008	2008-2009
Certificate	Paralegal Studies	2	0	0	1	0
Total Certificate Degrees Awarded		2	0	0	1	0
Associate	Child Development	22	17	18	10	13
Associate	Criminal Justice	24	15	15	20	15
Associate	Paralegal Studies	5	3	3	6	5
Total Associate Degrees Awarded		51	35	36	36	33
Bachelors	Accounting	21	17	18	14	22
Bachelors	Applied Music - Performance	3	2	2	1	4
Bachelors	Art	2	1	1	5	3
Bachelors	Art Education	0	0	1	1	0
Bachelors	Automotive Engineering Technology	1	2	0	0	0
Bachelors	Biology	32	24	29	33	23
Bachelors	Business and Office Education	0	0	0	0	0
Bachelors	Chemistry	4	7	6	9	14
Bachelors	Communication and Theatre Education	1	0	0	0	0
Bachelors	Computer Information Systems	64	45	52	44	33
Bachelors	Computer Science	16	9	3	6	4
Bachelors	Construction Engineering Technology	0	1	0	0	0
Bachelors	Criminal Justice	50	58	56	57	70
Bachelors	Drafting Design Technology	4	0	2	14	5
Bachelors	Early Childhood Ed GR PK-3	0	1	1	3	4
Bachelors	Economics	2	2	7	2	3
Bachelors	Electronic Engineering Technology	5	9	10	12	11
Bachelors	Elementary Education GR 1-6	8	8	8	9	7

5-Year Trend in Degrees Awarded by Level & Program

DEGREES	DESCRIPTION	2004-2005	2005-2006	2006-2007	2007-2008	2008-2009
Bachelors	English Education	2	2	2	0	2
Bachelors	English, General	9	9	7	5	3
Bachelors	French	0	0	0	0	1
Bachelors	History	1	1	2	8	5
Bachelors	Home Economics Education	0	0	0	0	0
Bachelors	Hotel/Restaurant Management	16	13	4	6	15
Bachelors	Kinesiology (Health and Phys. Ed)	14	19	19	25	23
Bachelors	Leisure Studies	18	14	13	24	15
Bachelors	Management	38	35	45	42	40
Bachelors	Manufacturing Engineering Tech.	2	0	1	1	0
Bachelors	Marketing	28	33	44	24	24
Bachelors	Mass Communication	26	38	34	37	29
Bachelors	Mathematics	1	6	1	1	1
Bachelors	Music Education	4	1	2	5	0
Bachelors	Nursing	44	42	61	64	102
Bachelors	Paralegal Studies	17	12	12	8	6
Bachelors	Physics	2	0	5	2	1
Bachelors	Political Science	5	8	6	10	13
Bachelors	Political Science (Pre-Law)	2	1	1	2	2
Bachelors	Psychology, General	28	25	25	20	23
Bachelors	Public Administration	3	2	3	0	0
Bachelors	Secondary Ed. - Science & Mathematics	1	1	0	2	0
Bachelors	Social Science Education	4	0	5	2	0
Bachelors	Social Work	24	19	14	22	24
Bachelors	Sociology	4	12	7	10	11
Bachelors	Special Education	1	1	3	3	2

5-Year Trend in Degrees Awarded by Level & Program

DEGREES	DESCRIPTION	2004-2005	2005-2006	2006-2007	2007-2008	2008-2009
Bachelors	Spanish	0	0	0	0	2
Bachelors	Speech Pathology	0	4	2	2	2
Bachelors	Theatre	5	1	3	2	5
Total Bachelor Degrees Awarded		512	485	517	537	554
Masters	Criminal Justice	16	21	11	12	26
Masters	Developmental Education	9	5	3	0	5
Masters	Elementary Education, General	1	0	0	0	0
Masters	Elementary/Early Childhood Education	1	7	3	1	0
Masters	Liberal Arts	2	0	0	0	0
Masters	Mass Communication	5	1	8	7	8
Masters	Natural Sciences Education	1	0	0	0	0
Masters	Nursing-Family Nurse Practitioner	11	12	10	12	14
Masters	Nursing-Nurse Educator	0	6	5	1	3
Masters	Public Administration	27	48	37	22	12
Masters	Social Science Education	9	10	24	5	7
Masters	Social Work	26	35	48	17	25
Masters	Sports Administration	22	20	21	16	15
Total Masters Degrees Awarded		130	165	170	93	115
Doctoral	Curriculum & Instruction				1	1
Doctoral	Educational Leadership	2	1	1	0	0
Doctoral	Developmental Education	4	3	2	2	8
Total Doctoral Degrees Awarded		6	4	3	3	9
University Total		701	691	726	670	711



GSU

Section III

RESOURCES

- A. Employees
- B. Financial
- C. Facilities

Full-time Staff by Ethnicity

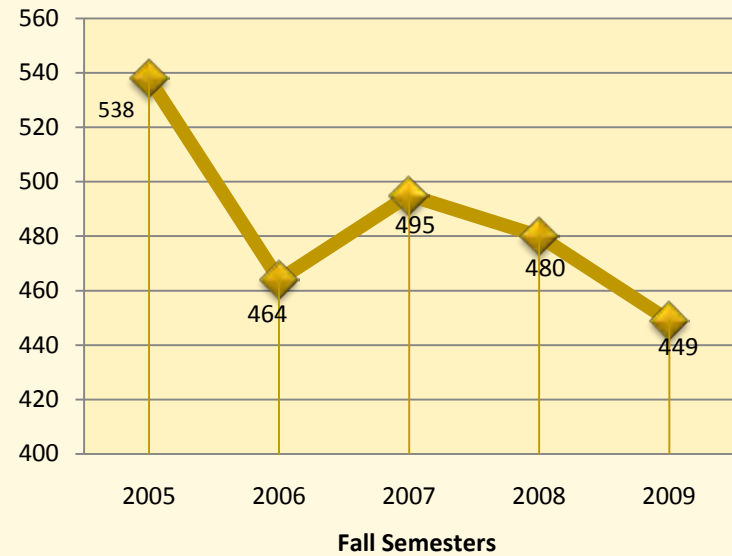
Ethnicity	Fall Semester				
	2004	2005	2006	2007	2009
American Indian/Alaskan Native	2	1	0	0	0
Asian/Pacific Islander	7	7	9	9	8
Black	503	435	461	449	418
Hispanic	1	1	4	2	2
White	23	18	17	17	19
Non-Resident Alien	1	1	3	2	1
Unknown	1	1	1	1	1
TOTAL	538	464	495	480	449

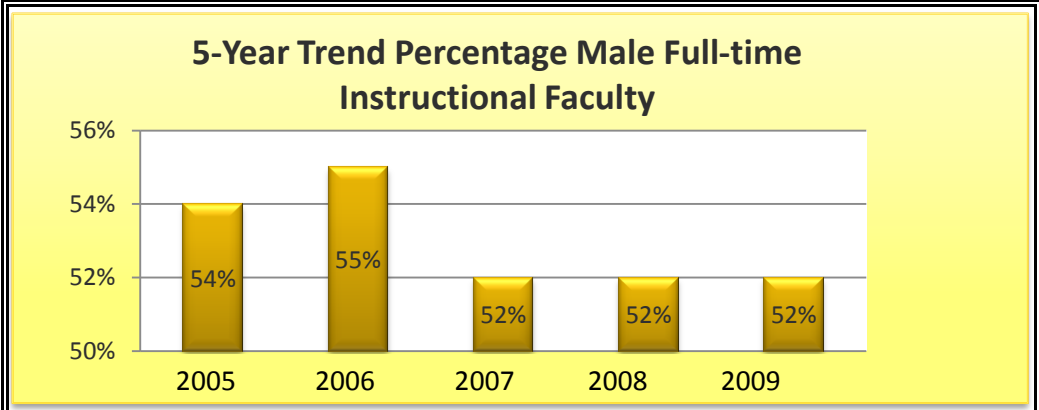
Full-time Staff by Gender

Fall Semester	Male	Female	Total
Fall 2005	182	356	538
Fall 2006	157	307	464
Fall 2007	163	332	495
Fall 2008	167	313	480
Fall 2009	161	288	449

Source: IPEDS

5-Year Trend for Full-time Staff

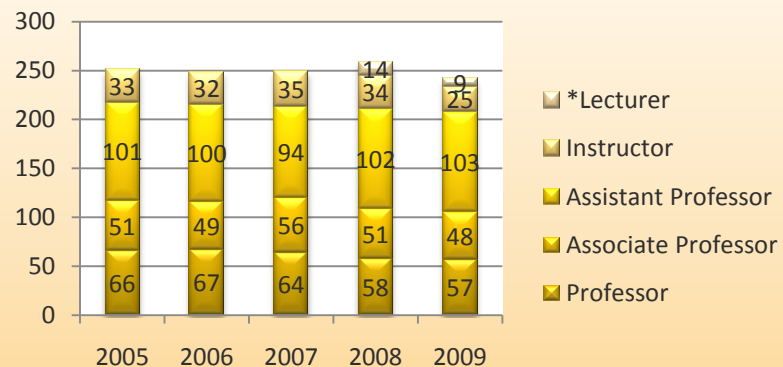




5-Year Trend of Full-time Instructional Faculty by Gender

Gender	Fall Semesters				
	2005	2006	2007	2008	2009
Male	136	136	130	134	135
Female	115	112	119	125	107
TOTAL	251	248	249	259	242
% Male	54%	55%	52%	52%	52%

5yr Trend Faculty Count by Rank



Full-time Instructional Faculty by Rank

	Fall Semesters				
	2005	2006	2007	2008	2009
Professor	66	67	64	58	57
Associate Professor	51	49	56	51	48
Assistant Professor	101	100	94	102	103
Instructor	33	32	35	34	25
*Lecturer				14	9
Total	251	248	249	259	242

**New Category for Fall 2008 Source: IPEDS*

5-Year Trend of the Average Salaries of Full-Time Faculty for All Ranks



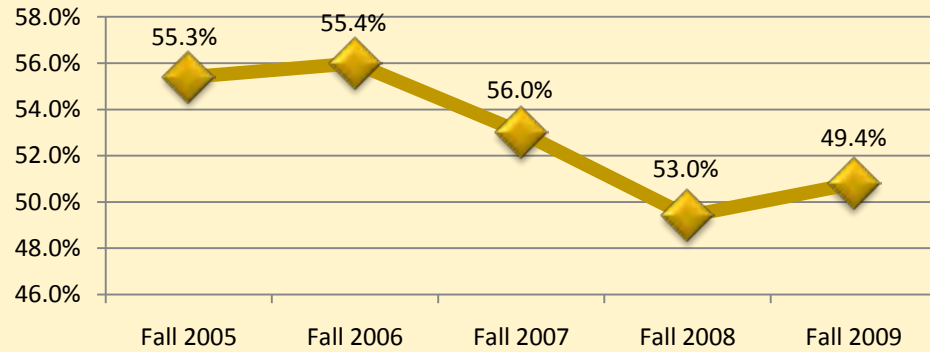
Average Salary of Full-time Faculty by Rank

Rank	Fall Semesters				
	2005	2006	2007	2008	2009
Professor	\$ 64,500.00	\$ 67,500.00	\$ 73,600.00	\$ 72,700.00	\$ 71,029.00
Associate Professor	\$ 55,200.00	\$ 56,800.00	\$ 61,900.00	\$ 63,013.00	\$ 62,652.00
Assistant Professor	\$ 48,600.00	\$ 51,000.00	\$ 53,500.00	\$ 53,200.00	\$ 53,517.00
Instructor	\$ 36,600.00	\$ 38,400.00	\$ 41,400.00	\$ 42,800.00	\$ 40,697.00
*Lecturer				\$ 45,400.00	\$ 44,473.00
All Ranks	\$ 51,225.00	\$ 53,425.00	\$ 57,600.00	\$ 55,422.60	\$ 54,473.60

*New IPEDS Category for Fall 2008

Source: IPEDS

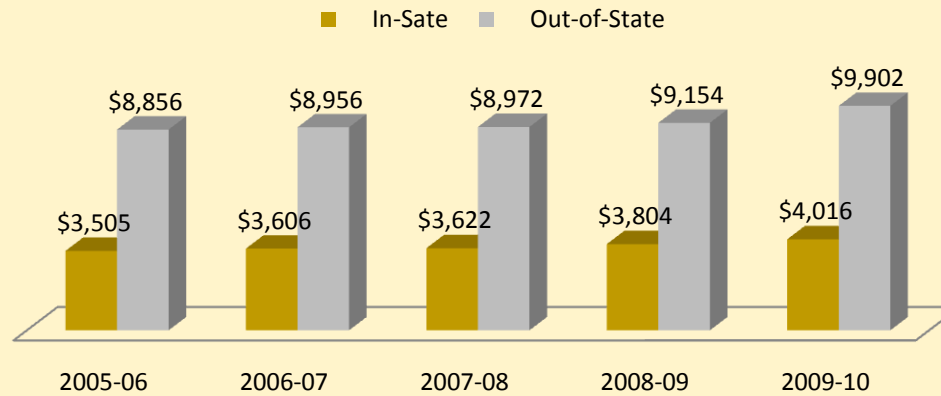
5-Year Trend Percentage Tenured Full-Time Instructional Faculty



Number and Percentage of Full-Time Instructional Faculty by Tenure Status					
Semester	Tenured	On Tenure Track	Not Eligible	Total	Percent Tenured
Fall 2005	139	68	44	251	55.4%
Fall 2006	139	73	36	248	56.0%
Fall 2007	132	74	43	249	53.0%
Fall 2008	128	70	61	259	49.4%
Fall 2009	123	75	44	242	50.8%

Source: IPEDS

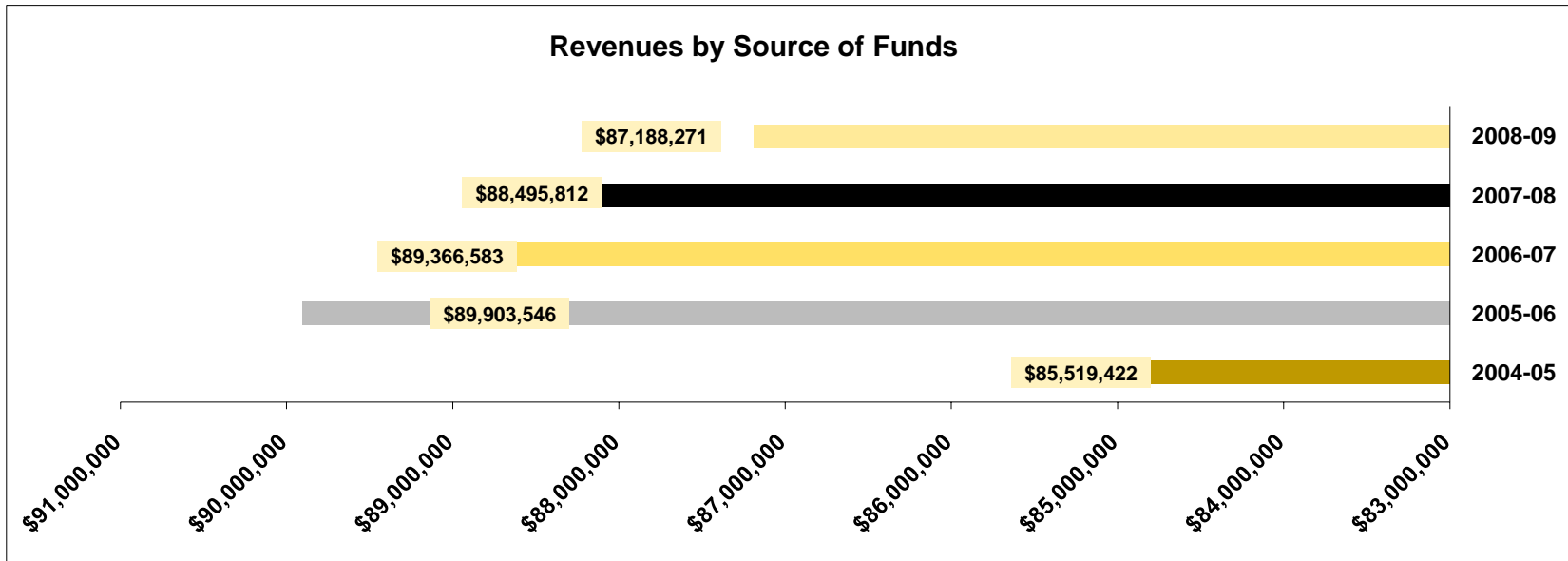
5yr Trend of Tuition and Mandatory Fees for In-State and Out-of-State Students



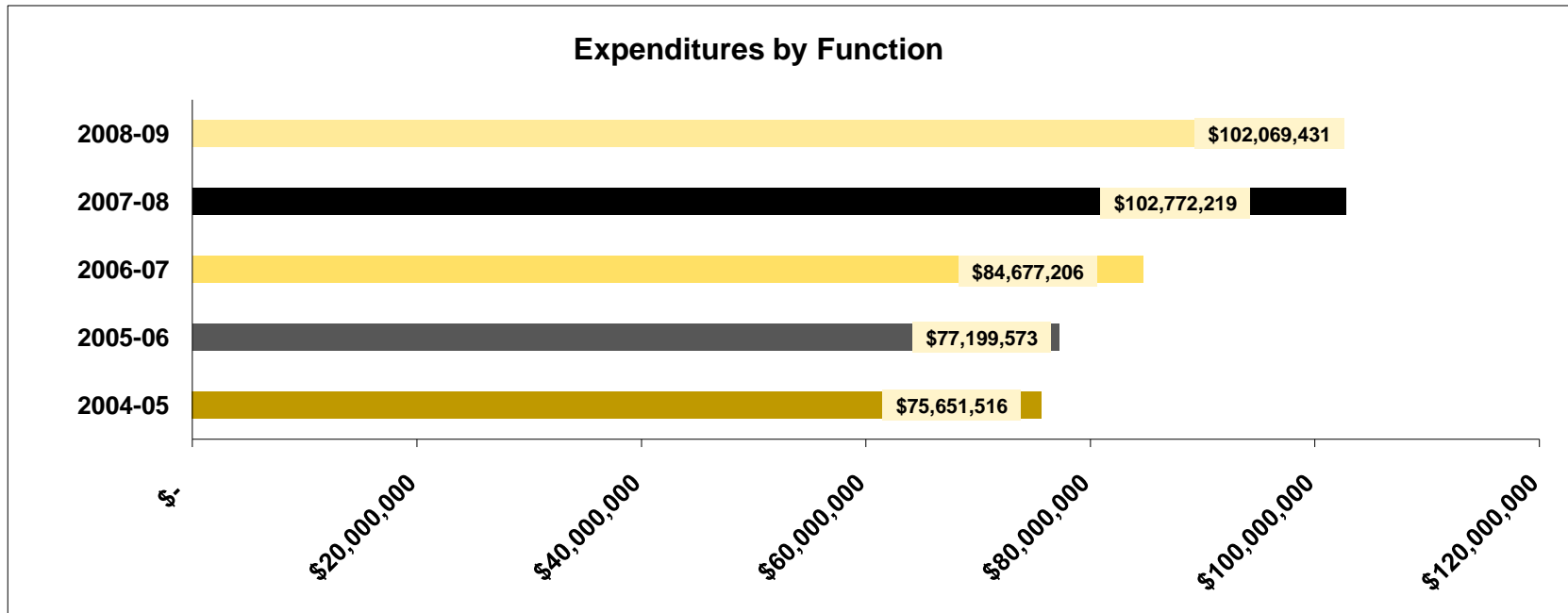
Student Costs					
Student Fees	2005-06	2006-07	2007-08	2008-09	2009-10
Tuition and Mandatory Fees					
In-State	\$ 3,505	\$ 3,606	\$ 3,622	\$ 3,804	\$ 4,016
Out-of-State	\$ 8,856	\$ 8,956	\$ 8,972	\$ 9,154	\$ 9,902
Room and Board Charges					
Room	\$ 2,138	\$ 2,476	\$ 2,600	\$ 5,286	\$ 4,456
Board	\$ 1,866	\$ 2,242	\$ 2,442	\$ 2,572	\$ 2,712

Source: IPEDS

Room and Board combined costs for 2008-09



Revenues by Source of Funds					
Source of Funds	2004-05	2005-06	2006-07	2007-08	2008-09
Tuition and Fees	\$ 13,953,121	\$ 16,523,606	\$ 16,177,945	\$ 15,180,781	\$ 17,056,488
Federal Appropriations	\$ -	\$ -	\$ -	\$ -	\$ -
Operating Grants & Contracts	\$ 17,245,797	\$ 17,218,131	\$ 17,745,795	\$ 19,636,755	\$ 8,630,912
State Appropriations	\$ 25,994,591	\$ 26,233,729	\$ 29,436,963	\$ 31,679,845	\$ 30,460,453
Operating Grants & Contracts	\$ 2,298,131	\$ 2,425,389	\$ 2,727,894	\$ 3,316,017	\$ 3,123,171
Local/Private Appropriations	\$ -	\$ -	\$ -	\$ -	\$ -
Operating Grants & Contracts	\$ 261,825	\$ 792,467	\$ 388,736	\$ 254,904	\$ 158,305
Auxiliary Enterprises (Sales & Services)	\$ 12,808,917	\$ 13,891,360	\$ 14,635,665	\$ 16,243,541	\$ 17,328,728
Gifts	\$ 707,959	\$ 571,197	\$ 263,737	\$ 254,035	\$ 894,305
Investment Income	\$ 547,009	\$ 33,473	\$ 2,639,781	\$ 251,475	\$ (102,838)
Other Operating & Non-Operating	\$ 1,271,215	\$ 1,855,859	\$ 1,633,475	\$ 1,678,459	-
Other Revenues and Additions	\$ 10,430,857	\$ 10,358,335	\$ 3,716,592	\$ -	\$ 9,638,747
Total Operating Revenues	\$ 85,519,422	\$ 89,903,546	\$ 89,366,583	\$ 88,495,812	\$ 87,188,271



Educational & General Expenditures by Function					
Function	2004-05	2005-06	2006-07	2007-08	2008-09
Instruction	\$ 21,931,667	\$ 22,737,090	\$ 24,185,032	\$ 27,644,390	\$ 28,251,444
Research	\$ 827,765	\$ 527,826	\$ 386,288	\$ 237,049	\$ 230,904
Public Service	\$ 57,920	\$ 150,791	\$ 130,660	\$ 85,445	\$ 76,865
Academic Support	\$ 8,001,182	\$ 8,270,152	\$ 9,066,345	\$ 9,559,847	\$ 9,024,684
Student Services	\$ 4,462,094	\$ 4,540,911	\$ 5,292,581	\$ 7,358,884	\$ 6,711,656
Institutional Support	\$ 11,504,198	\$ 10,531,259	\$ 11,919,692	\$ 15,382,708	\$ 16,727,639
Operation and Maintenance	\$ 4,779,982	\$ 4,958,625	\$ 6,744,089	\$ 9,969,277	\$ 5,936,160
Depreciation	\$ 3,070,564	\$ 3,478,897	\$ 3,766,583	\$ 4,704,962	\$ 6,158,566
Scholarships and Fellowships	\$ 7,652,650	\$ 7,248,916	\$ 7,803,992	\$ 7,559,864	\$ 8,236,015
Auxiliary Enterprises	\$ 13,236,164	\$ 14,751,855	\$ 15,304,541	\$ 18,591,334	\$ 17,328,728
Other (Operating & Non-operating)	\$ 127,330	\$ 3,251	\$ 77,403	\$ 1,678,459	\$ 3,386,770
Total E&G Expenses by Sources	\$ 75,651,516	\$ 77,199,573	\$ 84,677,206	\$ 102,772,219	\$ 102,069,431

Assignable Area by Room Use Fall 2009			
Facilities Use Code	Facility	ASF	ASF/FTE
100	Classrooms	115,569	25.7
200	Laboratory	138,283	30.8
300	Office	189,276	42.2
400	Study	41,972	9.3
500	Special Use	175,252	39.0
600	General Use	132,055	29.4
700	Supporting	40,283	9.0
800	Medical Care	2,101	0.5
900	Residential	353,483	78.7
000	Unclassified	6,267	1.4
Other	Residential	841,058	187.4
Total Facilities Assignable Square Feet (ASF)/FTE			266
Fall 2009 Full-time Equivalent (FTE) Enrollment			4,489
Total Assignable Area			1,194,541

**Source Board of Regents website*



GRAMBLING
STATE UNIVERSITY
WHERE EVERYBODY IS SOMEBODY