

GRAMBLING
STATE UNIVERSITY
GRAMBLING, LOUISIANA



2011-2012
2011-2012
eFact Book
eFact Book

OFFICE OF INSTITUTIONAL PLANNING, ASSESSMENT, & EFFECTIVENESS

GRAMBLING STATE UNIVERSITY
eFACT BOOK
2011-2012

Foreword and Acknowledgement.....iii

I. INSTITUTIONAL PROFILE

Current Board Members & Grambling State Administration 2
University of Louisiana System Board of Supervisors 3
Grambling State University Current Administration 4
Organizational Chart 5
Accrediting Agencies 6
Historical Notes 7
Peer Institutions..... 8
Comparison of Grambling State University to Peers-Crime Statistics 9-10

II. STUDENT PROFILE

A. First-Time Freshmen

Applicants, Admits, and Enrollees 12-13
Admission Test Scores 14

B. Enrollment Information

Headcount Enrollment Trend by Level 15
Headcount Enrollment Trend by Ethnicity 16
Headcount Enrollment by Gender 17
Headcount Enrollment by Classification and Gender 18
Headcount Enrollment by Status 19
Headcount Enrollment by Age, Level, and Gender-Fall 2011 20
Enrollment by Country 21
Enrollment by State 22
Headcount Enrollment by Louisiana Parish 23-24
Headcount Enrollment Trend by Student Residency 25
Headcount Enrollment Trend Comparison of FTE 26

C. Progression and Graduation

First-to-Second Year Retention Rates 27
Six-Year Graduation Rates 28
Degrees Awarded by Level and Gender 29

| | |
|--|-------|
| Degrees Awarded by Level of Degree and Race | 30 |
| Trends of Degrees Awarded by Level and Program | 31-34 |

III. RESOURCES

A. Employees

| | |
|--|----|
| Full-Time Staff by Ethnicity and Gender | 36 |
| Full-Time Instructional Faculty Trend by Gender and Rank | 37 |
| Full-Time Instructional Faculty Trend by Rank | 38 |
| Average Salary Trend of Full-Time Faculty by Rank | 39 |
| Trend in Percentage of Full-time Instructional Faculty | 40 |

B. Finances

| | |
|--|----|
| Trend of Tuition and Fees for In-state and Out-of-state students ... | 41 |
| Revenues by Source of Funds Fiscal Year Ending June, 2012 | 42 |
| Expenditures by Function | 43 |

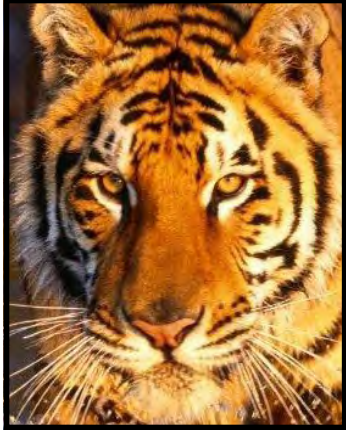
C. Facilities

| | |
|---|----|
| Fall 2011 Assignable Area by Room Use | 44 |
|---|----|

FOREWORD AND ACKNOWLEDGEMENT

This is the sixth edition of the Grambling State University *eFact Book* developed by the Office of Institutional Planning, Assessment, and Effectiveness (formerly the Office of Planning and Institutional Research-PAIR). This document provides five-year statistical trend information presented in tables and graphs, as well as other information provided for the most current year available. The Office of Institutional Planning collects, compiles, and disseminates information on all facets of the University on a continuous basis. This publication provides a wealth of information about Grambling State University and is designed to give University constituents and external reporting agencies easy access to statistical data pertaining to the institution.

The concerted effort of the Office of Institutional Planning, Assessment, and Effectiveness staff is to make this publication a useful resource for retrieving University information by utilizing an online medium. The staff wishes to thank all of the offices and individual persons on campus who contributed information and suggestions. Special thanks and appreciation goes to Mr. Bruce Morgan, Grambling State University's Web Administrator, for his contributions.



GSU

Section I

INSTITUTIONAL PROFILE

University of Louisiana System
Board of Supervisors Officers

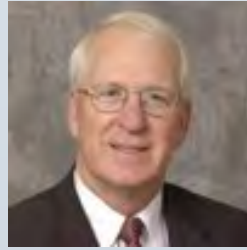
Wayne Parker Chair
Russell Mosely Vice Chair
Paul Aucoin Parliamentarian

Board Members

| | | |
|-------------------------|---------------------------|-------------------|
| Andre Coudrain | Edward J. Crawford, III | William Dearmon |
| Jimmy R. Faircloth, Jr. | David Guidry | E. Gerald Herbert |
| Louis J. Lambert | Renee Lapeyrolerie | John O. LeTard |
| Jimmy Long, Sr. | Jimmie "Beau" Martin, Jr. | Carl Shetler |
| | Winfred Sibille | |

Grambling State University
Current Administration

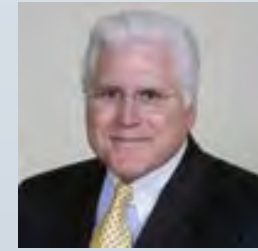
President Dr. Frank Pogue
Provost and Vice President for Academic Affairs Dr. Connie Walton
Interim Dean, College of Arts & Science Dr. Evelyn Winn
Dean, College of Business Dr. Carl Wright
Dean, College of Education Dr. Larnell Flannagan
Acting Dean, College of Professional Studies Dr. Rama Tunuguntla
Associate Vice President for Research
and Dean of the Graduate School Dr. Janet Guyden
Vice President for Student Affairs Dr. Stacey Duhon
Vice President for Finance Mr. Leon Sanders



Wayne Parker
Chair



Russell Mosely
Vice Chair



Paul Aucoin
Parliamentarian



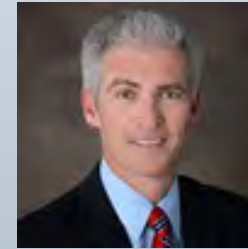
Andre Courdrain



Edward J. Crawford, III



William Dearmon



Jimmy R. Faircloth, Jr.



David Guidry



E. Gerald Hebert



Louis J. Lambert



Renee Lapeyrolerie



John O. LeTard



Jimmy Long, Sr.



Jimmie "Beau" Martin, Jr.

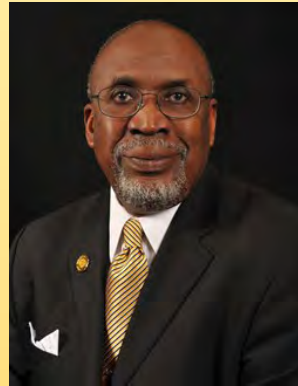


Carl Shetler



Winfred Sibille

Grambling State University Administration



Dr. Frank G. Pogue
President



Dr. Stacey Duhon
Vice President for
Student Affairs



Dr. Connie Walton
Provost and Vice President of
Academic Affairs



Mr. Leon Sanders
Vice President of
Finance

Organizational Chart

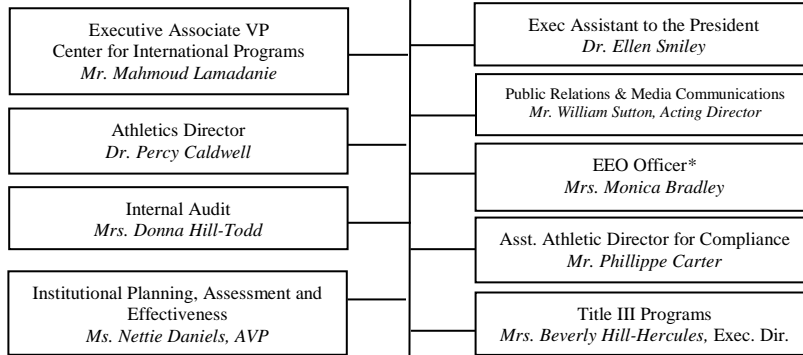
Rev. 10/2/12



ULS Board of Supervisors

President

Dr. Frank G. Pogue

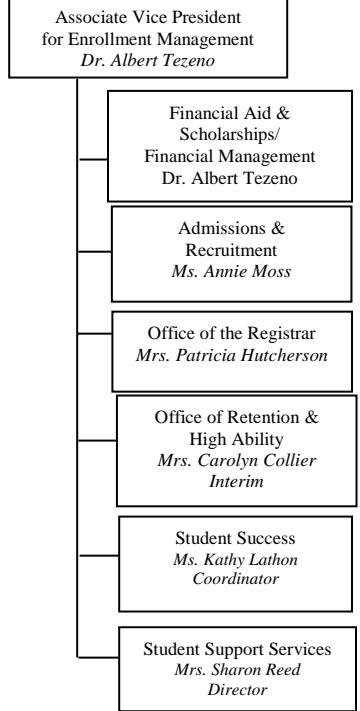
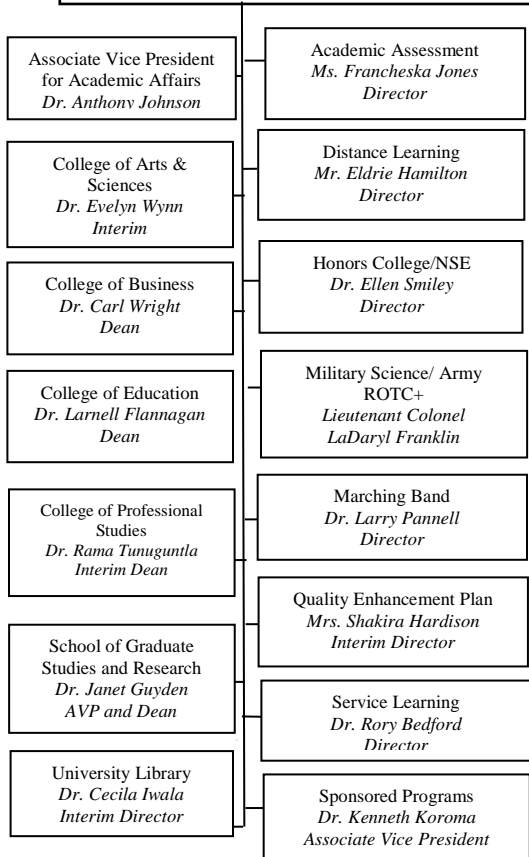


*Dual responsibility

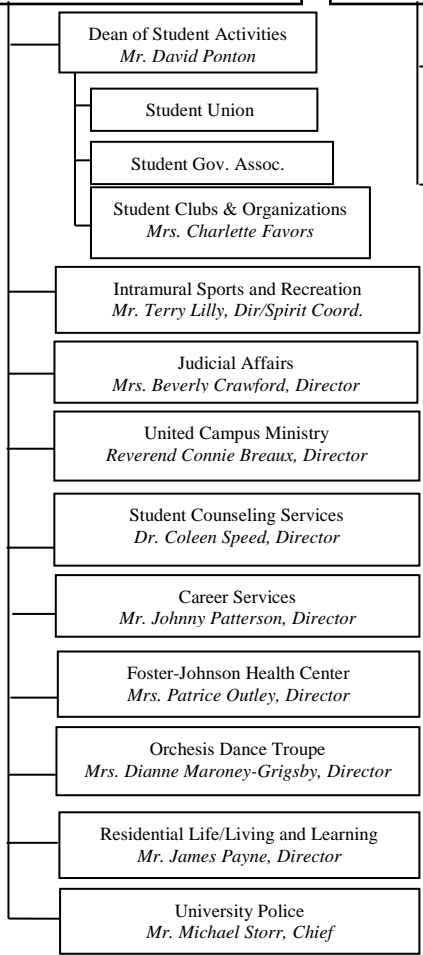
**Second in Command

+Air Force Available through LA Tech

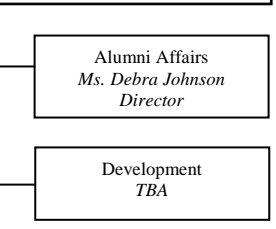
** Provost/V.P. for Academic Affairs *Dr. Connie Walton*



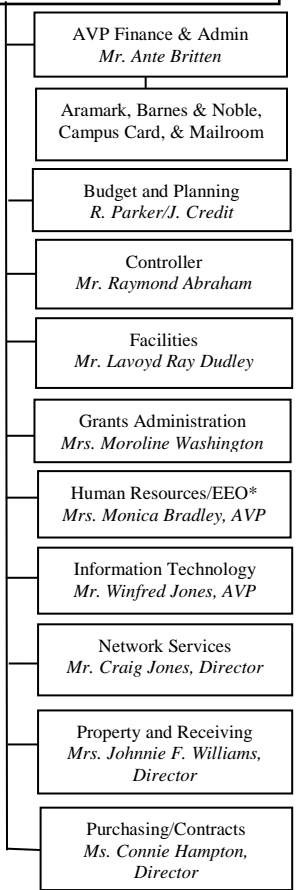
V.P. for Student Affairs *Dr. Stacey Duhon*



V.P. for Institutional Advancement *Vacant*



V.P. for Finance & Administration *Mr. Leon Sanders*



GRAMBLING STATE UNIVERSITY

is accredited by, approved by, or holds membership in the following associations.

| College/School/Department | Accrediting Agencies |
|---|--|
| COLLEGE OF ARTS & SCIENCES | |
| Art | National Association of Schools of Art and Design (membership only) |
| Applied Music-Performance | National Association of Schools of Music (NASM) |
| Chemistry | American Chemical Society (ACS) |
| Computer Science | Accreditation Board for Engineering and Technology (ABET) |
| Drafting Design Technology | Accreditation Board for Engineering and Technology (ABET) |
| Electronics Engineering Technology | Accreditation Board for Engineering and Technology (ABET) |
| Theatre | National Association of Schools of Theatre (NAST) |
| COLLEGE OF BUSINESS | |
| Accounting | AACSB: The International Association for Management Education |
| Computer Information Systems | AACSB: The International Association for Management Education |
| Economics | AACSB: The International Association for Management Education |
| Management | AACSB: The International Association for Management Education |
| Marketing | AACSB: The International Association for Management Education |
| COLLEGE OF EDUCATION | |
| Curriculum and Instruction | National Council for Accreditation of Teacher Education (NCATE) |
| Developmental Education | National Council for Accreditation of Teacher Education (NCATE) |
| Early Childhood Education | National Council for Accreditation of Teacher Education (NCATE) |
| Elementary Education | National Council for Accreditation of Teacher Education (NCATE) |
| Educational Leadership | National Council for Accreditation of Teacher Education (NCATE) |
| Leisure Studies (Kinesiology) | National Recreation and Park Association (NRPA) |
| Middle School Education-English & Mathematics | National Council for Accreditation of Teacher Education (NCATE) |
| Special Education/Special Education (Mild/Moderate) | National Council for Accreditation of Teacher Education (NCATE) |
| Teacher Education Programs | National Council for Accreditation of Teacher Education (NCATE) |
| COLLEGE OF PROFESSIONAL STUDIES | |
| Mass Communication | Accrediting Council on Education in Journalism and Mass Communication (ACEJMC) |
| Public Administration | National Association of Schools of Public Affairs and Administration (NASPAA) |
| School of Nursing | National League for Nursing Accrediting Commission, Inc. (NLNAC) |
| School of Social Work | Council on Social Work Education (CSWE) |
| UNIVERSITY | Southern Association of Colleges and Schools (SACS) |

HISTORICAL NOTES

Presidents

| | |
|---------------------------------|--------------|
| Charles P. Adams | 1907-1936 |
| Ralph W.E. Jones | 1936-1977 |
| Dr. Joseph B. Johnson | 1977-1991 |
| Dr. Harold W. Lundy | 1991-1994 |
| Dr. Raymond H. Hicks | 1994-1997 |
| Dr. Leonard L. Haynes (Interim) | 1997-1998 |
| Dr. Steve A. Favors | 1998-2001 |
| Dr. Neari F. Warner (Acting) | 2001-2004 |
| Dr. Horace A. Judson | 2004-2009 |
| Dr. Frank G. Pogue | 2010-Present |

Highlights

- 1901 Founded by Charles P. Adams who became the first President; the Institution was first known as The Colored Industrial and Agricultural School and was supported by private donations
- 1912 Became a Quasi-Public School
- 1918 Name changed to Lincoln Parish Training School under the direction of Lincoln Parish School Board
- 1928 Became a state junior college; name changed to Louisiana Negro Normal and Industrial Institute
- 1939 A three-year professional certificate was awarded
- 1940 A four-year degree program was inaugurated
- 1944 First Bachelor of Science degree in Elementary Education was granted
- 1946 Name changed to Grambling College of Louisiana
- 1953 Received initial accreditation from the Southern Association of Colleges and Schools (SACS)
- 1958 Liberal Arts Program was inaugurated; obtained full membership in SACS
- 1974 Name changed to Grambling State University; Graduate School was inaugurated
- 1997 Eddie Robinson, Sr. earned the title of "Winningest Collegiate Football Coach" with 324 victories in 1985, ended his career with 408 wins.
- 2000 Ranked first among the nation's colleges and universities in awarding four-year degrees in computer science to African American students
- 2003 Achieved 100% accreditation of the State's mandatory degree programs
- 2010 Eddie G. Robinson Museum officially opened on GSU campus
Accreditations by Southern Association Colleges and Schools reaffirmed
- 2011 Achieved 100% accredited programs eligible for accreditation
- 2012 Obtained GSU West Campus through Legislative Act 236, granting 157 acres and 47 buildings

**Grambling State University's
Peer Institutions**

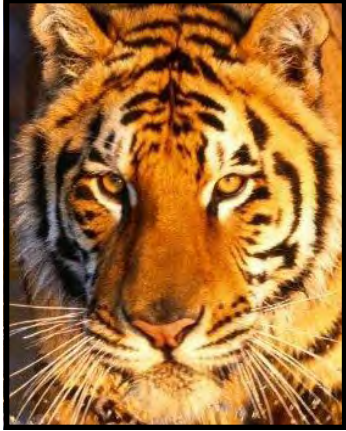
| UNIVERSITY | WEBSITE |
|-------------------------------|---|
| Albany State University | http://www.asurams.edu |
| Alcorn State University | http://www.alcorn.edu |
| Angelo State University | http://www.angelo.edu |
| Delaware State University | http://www.desu.edu/ |
| Delta State University | http://www.deltastate.edu/ |
| Fayetteville State University | http://www.uncfsu.edu/ |
| McNeese State University | http://www.mcneese.edu |
| Norfolk State University | http://www.nsu.edu/ |
| Texas Southern University | http://www.tsu.edu |
| Virginia State University | http://www.vsu.edu |

CRIME STATISTICS BY OFFENSE
Comparison of Grambling State University to Peers
As Reported in 2010 or 2011

| PEER INSTITUTIONS | Student Enrollment | Murder & Non-Negligent Manslaughter | Negligent Manslaughter | Forcible/Non-Forcible Rape | Robbery | Aggravated Assault | Burglary | Motor Vehicle Theft | Arson | Total Criminal Offenses |
|---|--------------------|-------------------------------------|------------------------|----------------------------|----------|--------------------|-----------|---------------------|----------|-------------------------|
| Albany State University | 4,663 | 0 | 0 | 1 | 0 | 3 | 4 | 1 | 0 | 9 |
| Alcorn State University | 4,018 | 0 | 0 | 1 | 1 | 3 | 17 | 0 | 7 | 29 |
| Angelo State University | 7,084 | 0 | 0 | 0 | 0 | 1 | 4 | 1 | 0 | 6 |
| Delaware State University | 4,154 | 0 | 0 | 1 | 3 | 6 | 14 | 0 | 0 | 24 |
| Delta State University | 4,624 | 0 | 0 | 0 | 0 | 1 | 18 | 0 | 0 | 19 |
| Fayetteville State University | 5,930 | 0 | 0 | 3 | 2 | 1 | 25 | 8 | 1 | 40 |
| Grambling State University | 5,207 | 0 | 0 | 0 | 3 | 7 | 29 | 0 | 0 | 39 |
| McNeese State University | 8,784 | 0 | 0 | 0 | 0 | 0 | 8 | 2 | 0 | 10 |
| Norfolk State University | 7,091 | 0 | 0 | 3 | 4 | 2 | 32 | 3 | 3 | 47 |
| Texas Southern University | 9,730 | 0 | 0 | 0 | 2 | 3 | 58 | 5 | 7 | 75 |
| Virginia State University | 5,890 | 0 | 0 | 1 | 3 | 3 | 0 | 4 | 0 | 11 |
| <i>Source: http://www.fbi.gov - The official site of the U.S. Federal Bureau of Investigation.</i> | | | | | | | | | | |

CRIME STATISTICS BY OFFENSE
Comparison of Grambling State University
to All Public 4-Year Institutions in Louisiana
As Reported for 2010 or 2011

| Comparison to All Public 4-Year Institutions in Louisiana | Student Enrollment | Murder & Non-Negligent Manslaughter | Negligent Manslaughter | Forcible Rape | Robbery | Aggravated Assault | Burglary | Motor Vehicle Theft | Arson | Total Criminal Offenses |
|---|--------------------|-------------------------------------|------------------------|---------------|----------|--------------------|-----------|---------------------|----------|-------------------------|
| Louisiana State University and A&M college | 29,718 | 0 | 0 | 5 | 5 | 10 | 13 | 13 | 3 | 49 |
| University of Louisiana at Lafayette | 16,885 | 0 | 0 | 1 | 2 | 7 | 13 | 1 | 0 | 24 |
| Southeastern Louisiana University | 15,405 | 0 | 0 | 2 | 2 | 1 | 33 | 4 | 0 | 42 |
| Louisiana Tech University | 11,518 | 0 | 0 | 0 | 1 | 0 | 30 | 0 | 0 | 31 |
| University of New Orleans | 10,903 | 0 | 0 | 0 | 1 | 0 | 12 | 5 | 0 | 18 |
| Northwestern State University | 9,191 | 0 | 0 | 0 | 0 | 2 | 33 | 0 | 0 | 35 |
| McNeese State University | 8,784 | 0 | 0 | 0 | 0 | 0 | 8 | 2 | 0 | 10 |
| University of Louisiana at Monroe | 8,583 | 0 | 0 | 0 | 0 | 4 | 1 | 1 | 0 | 6 |
| Southern University and A&M College | 6,866 | 0 | 0 | 2 | 9 | 4 | 35 | 0 | 0 | 50 |
| Nicholls State University | 6,767 | 0 | 0 | 0 | 0 | 0 | 8 | 1 | 0 | 9 |
| Grambling State University | 5,207 | 0 | 0 | 0 | 4 | 8 | 49 | 3 | 0 | 64 |
| Louisiana State University- Shreveport | 4,562 | 0 | 0 | 0 | 0 | 0 | 5 | 0 | 0 | 5 |
| Southern University at New Orleans | 3,245 | 0 | 0 | 0 | 0 | 1 | 0 | 0 | 0 | 1 |
| Louisiana State University-Alexandria | 2,612 | 0 | 0 | 0 | 0 | 0 | 0 | 0 | 0 | 0 |
| <i>Source: http://www.fbi.gov - The official site of the U.S. Federal Bureau of Investigation.</i> | | | | | | | | | | |



GSU

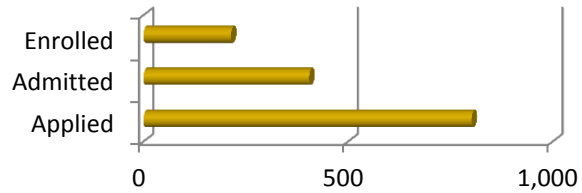
Section II

STUDENT PROFILE

- A. First-Time Freshmen
- B. Enrollment Information
- C. Progression and Graduation

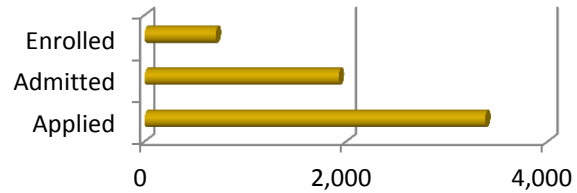
**Number of Students Applying, Admitted and Enrolled
First-time Freshmen and First-time Transfers**

**Fall 2010
First - Time Transfers**



First-time Transfers
Applied, Admitted, Enrolled

**Fall 2010
First - Time Freshmen**



First-time Freshmen
Applied, Admitted, Enrolled

| Semester | Applied | Admitted | Enrolled | Yield of Admitted to Enrolled |
|-----------|---------|----------|----------|-------------------------------|
| Fall 2011 | 802 | 405 | 214 | 52.8% |

| Semester | Applied | Admitted | Enrolled | Yield of Admitted to Enrolled |
|-----------|---------|----------|----------|-------------------------------|
| Fall 2011 | 3,379 | 1,926 | 706 | 36.7% |

Source: GSU Office of Admissions and Statewide Student Profile System

Number of Students Applying, Admitted and Enrolled First-time Freshmen and First-time Transfers

First-time Freshmen Applied, Admitted, Enrolled

| Semester | Applied | Admitted | Enrolled | Yield of Admitted to Enrolled |
|-----------|---------|----------|----------|-------------------------------|
| Fall 2007 | 5,957 | 1,793 | 1,210 | 67.5% |
| Fall 2008 | 6,075 | 2,000 | 1,215 | 60.8% |
| Fall 2009 | 4,419 | 1,381 | 931 | 67.4% |
| Fall 2010 | 4,253 | 1,322 | 737 | 55.7% |
| Fall 2011 | 3,379 | 1,926 | 706 | 36.7% |

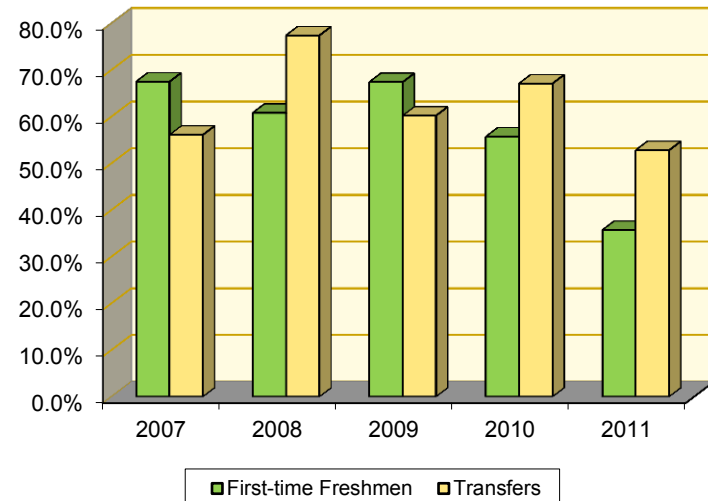
Source: GSU Office of Admissions and Statewide Student Profile System

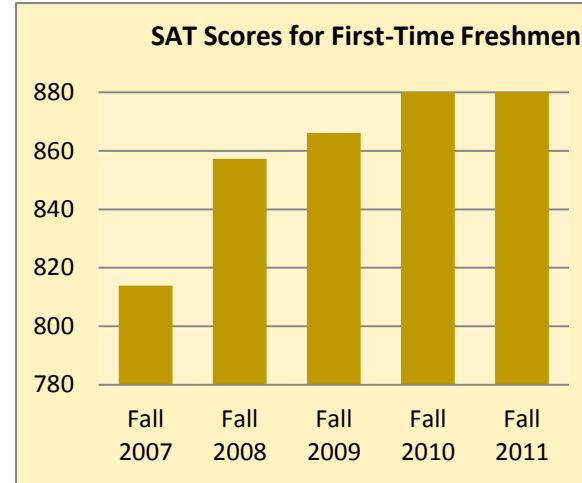
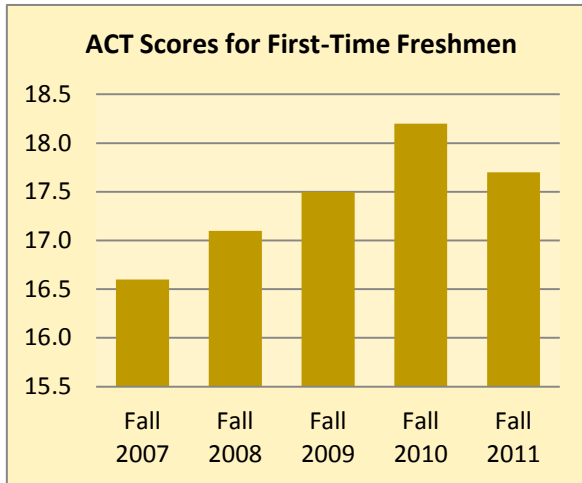
First-time Transfers Applied, Admitted, Enrolled

| Semester | Applied | Admitted | Enrolled | Yield of Admitted to Enrolled |
|-----------|---------|----------|----------|-------------------------------|
| Fall 2007 | 932 | 383 | 215 | 56.1% |
| Fall 2008 | 689 | 252 | 195 | 77.4% |
| Fall 2009 | 724 | 269 | 162 | 60.2% |
| Fall 2010 | 518 | 325 | 218 | 67.1% |
| Fall 2011 | 802 | 405 | 214 | 52.8% |

Source: GSU Office of Admissions and Statewide Student Profile System

Yield of Admitted to Enrolled



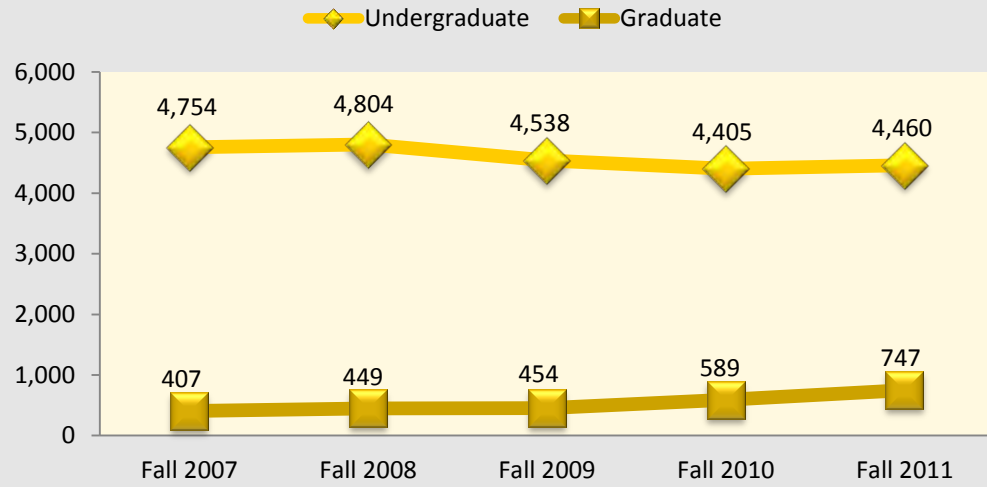


| Average ACT and SAT Scores for First time Full Time Freshmen | | |
|--|------|-------|
| Semester | ACT | SAT |
| Fall 2007 | 16.6 | 813.9 |
| Fall 2008 | 17.1 | 857.3 |
| Fall 2009 | 17.5 | 866.1 |
| Fall 2010 | 18.2 | 888.5 |
| Fall 2011 | 17.7 | 895.0 |

Sources: ACT Profiles and University data system

Headcount Enrollment

Headcount Enrollment by Student Level



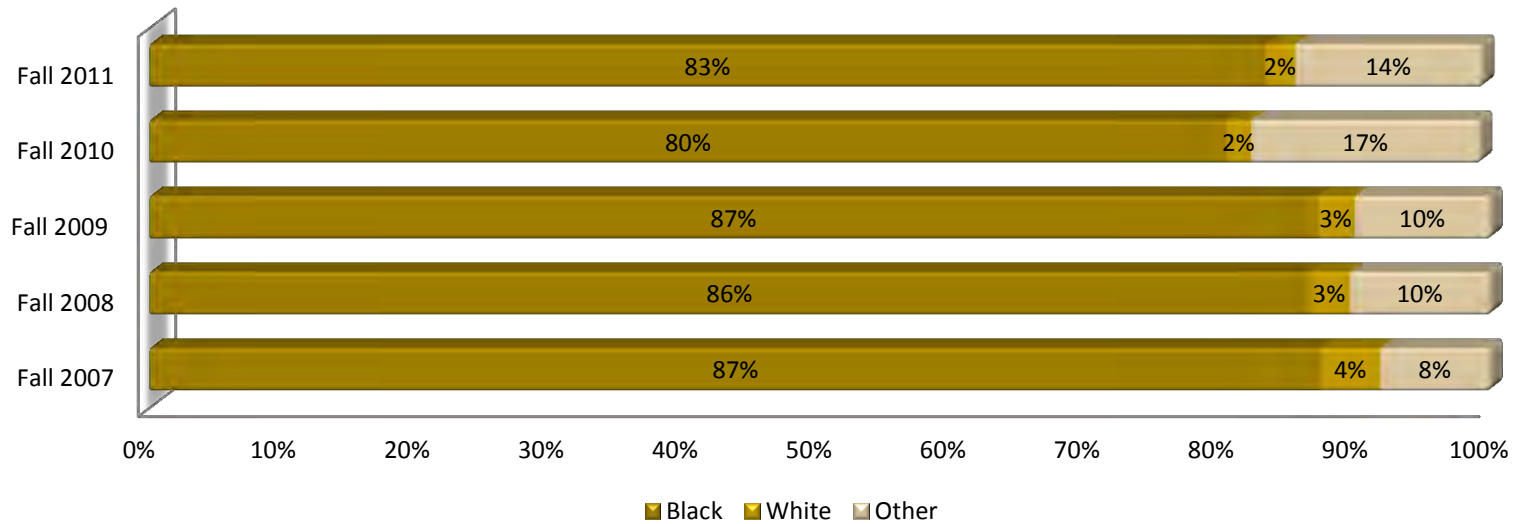
Headcount Enrollment Trend by Level

| | Undergraduate | Graduate | Total | Percent Undergraduate |
|-----------|---------------|----------|-------|-----------------------|
| Fall 2007 | 4,754 | 407 | 5,161 | 92.1% |
| Fall 2008 | 4,804 | 449 | 5,253 | 91.5% |
| Fall 2009 | 4,538 | 454 | 4,992 | 90.9% |
| Fall 2010 | 4,405 | 589 | 5,994 | 88.2% |
| Fall 2011 | 4,460 | 747 | 5,207 | 85.7% |

Source: Statewide Student Profile System

Headcount Enrollment

Percentage for Headcount Enrollment by Ethnicity per Fall Semester



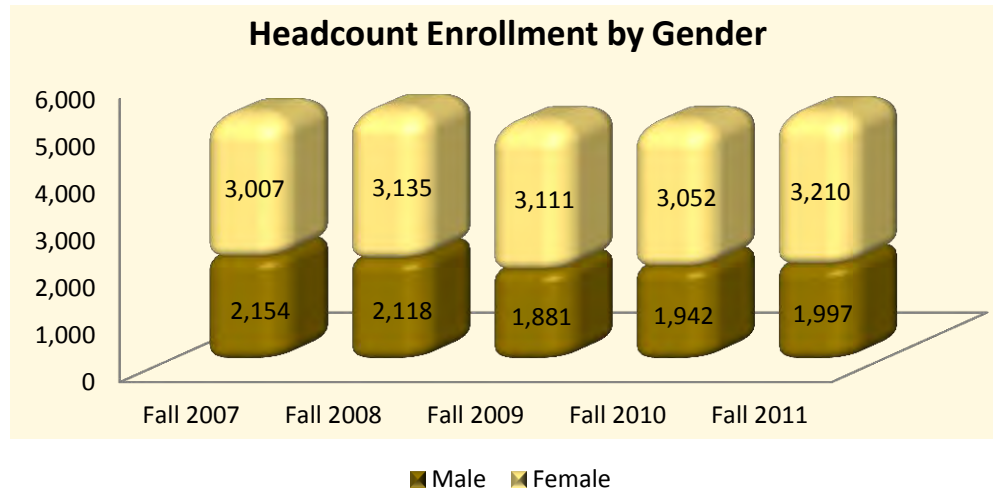
Headcount Enrollment by Ethnicity

| Semester | Non-Resident Alien | Black, Non-Hispanic | American Indian/Alaskan Native | Asian or Pacific Islander | Hispanic | White, Non-Hispanic | Two or more races | Native Hawaiian or other Pacific Islander | Unknown | Total |
|-----------|--------------------|---------------------|--------------------------------|---------------------------|----------|---------------------|-------------------|---|---------|-------|
| Fall 2007 | 338 | 4,510 | 9 | 24 | 17 | 226 | 0 | 0 | 37 | 5,161 |
| Fall 2008 | 497 | 4,543 | 11 | 16 | 16 | 159 | 0 | 0 | 11 | 5,253 |
| Fall 2009 | 447 | 4,347 | 12 | 15 | 17 | 140 | 0 | 0 | 14 | 4,992 |
| Fall 2010 | 424 | 4,010 | 7 | 8 | 50 | 93 | 35 | 3 | 364 | 4,994 |
| Fall 2011 | 384 | 4,333 | 8 | 9 | 54 | 115 | 27 | 4 | 273 | 5,207 |

Source: Statewide Student Profile System

Note: Fall 2010 reflects implementation of new Federally mandated racial/ethnicity codes

Headcount Enrollment



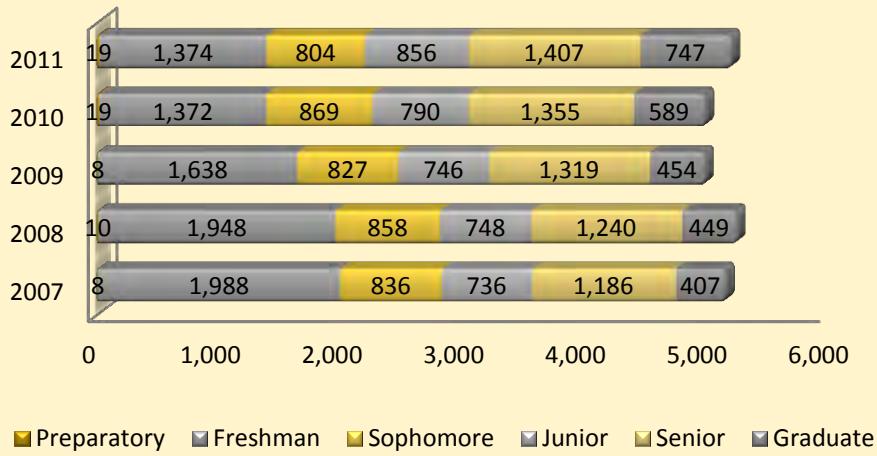
Headcount Enrollment by Gender

| | Male | Female | Total | % Male |
|-----------|-------|--------|-------|--------|
| Fall 2007 | 2,154 | 3,007 | 5,161 | 42% |
| Fall 2008 | 2,118 | 3,135 | 5,253 | 40% |
| Fall 2009 | 1,881 | 3,111 | 4,992 | 38% |
| Fall 2010 | 1,942 | 3,052 | 4,994 | 39% |
| Fall 2011 | 1,997 | 3,210 | 5,207 | 38% |

Source: Statewide Student Profile System

Headcount Enrollment

Headcount Enrollment by Classification



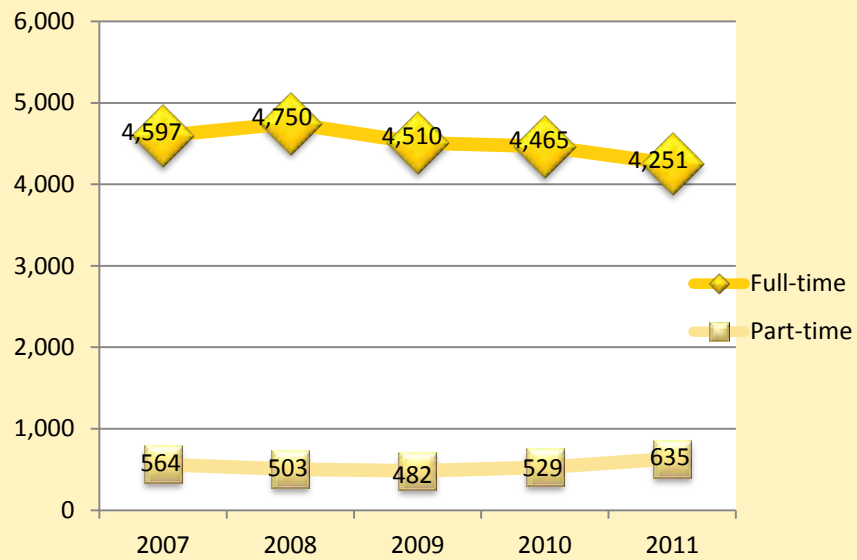
Headcount Enrollment by Classification

| | 2007 | 2008 | 2009 | 2010 | 2011 |
|--------------|--------------|--------------|--------------|--------------|--------------|
| Preparatory | 8 | 10 | 8 | 19 | 19 |
| Freshman | 1,988 | 1,948 | 1,638 | 1,372 | 1,374 |
| Sophomore | 836 | 858 | 827 | 869 | 804 |
| Junior | 736 | 748 | 746 | 790 | 856 |
| Senior | 1,186 | 1,240 | 1,319 | 1,355 | 1,407 |
| Graduate | 407 | 449 | 454 | 589 | 747 |
| Total | 5,161 | 5,253 | 4,992 | 4,994 | 5,207 |

Source: Statewide Student Profile System

Headcount Enrollment

Headcount Enrollment by Full- and Part-time Student Status



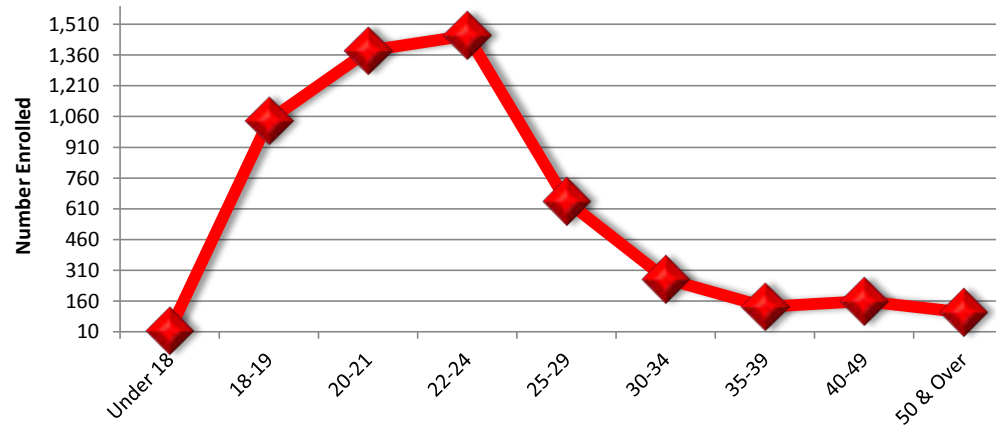
Headcount Enrollment by Status

| Fall Semester | Full-time | Part-time | Total | Percent Part-time |
|---------------|-----------|-----------|-------|-------------------|
| Fall 2007 | 4,597 | 564 | 5,161 | 10.9% |
| Fall 2008 | 4,750 | 503 | 5,253 | 9.6% |
| Fall 2009 | 4,510 | 482 | 4,992 | 9.7% |
| Fall 2010 | 4,465 | 529 | 4,994 | 10.6% |
| Fall 2011 | 4,251 | 635 | 5,207 | 12.2% |

Source: Statewide Student Profile System

Headcount Enrollment

Headcount Enrollment by Age for Fall 2011



Headcount Enrollment by Age, Level and Gender Fall 2011

| Age Range | UNDERGRADUATE | | | GRADUATE | | | Total |
|---------------|---------------|--------------|--------------|------------|------------|------------|--------------|
| | Male | Female | Subtotal | Male | Female | Subtotal | |
| Under 18 | 4 | 12 | 16 | 0 | 0 | 0 | 16 |
| 18-19 | 410 | 631 | 1,041 | 0 | 0 | 0 | 1,041 |
| 20-21 | 557 | 823 | 1,380 | 2 | 0 | 2 | 1,382 |
| 22-24 | 587 | 725 | 1,312 | 44 | 100 | 144 | 1,456 |
| 25-29 | 161 | 256 | 417 | 87 | 144 | 231 | 648 |
| 30-34 | 40 | 89 | 129 | 30 | 109 | 139 | 268 |
| 35-39 | 12 | 43 | 55 | 25 | 52 | 77 | 132 |
| 40-49 | 7 | 66 | 73 | 15 | 71 | 86 | 159 |
| 50 & Over | 4 | 33 | 37 | 12 | 56 | 68 | 105 |
| TOTALS | 1,782 | 2,678 | 4,460 | 215 | 532 | 747 | 5,207 |

Source: Statewide Student Profile System

| Enrollment by Country Fall 2011 | | | |
|------------------------------------|--------------|--------------|--------------|
| Country | Gender | | Totals |
| | Male | Female | |
| Antigua | 10 | 20 | 30 |
| Bahamas | 3 | 0 | 3 |
| Barbados | 0 | 1 | 1 |
| Belize | 1 | 1 | 2 |
| Bulgaria | 0 | 1 | 1 |
| Brazil | 0 | 1 | 1 |
| Canada | 2 | 1 | 3 |
| Cambodia | 2 | 1 | 3 |
| Sri Lanka | 0 | 1 | 1 |
| China | 2 | 2 | 4 |
| Cameroon | 19 | 23 | 42 |
| Columbia | 0 | 1 | 1 |
| Dominica | 10 | 25 | 35 |
| Dominican Republic | 1 | 0 | 1 |
| France | 0 | 2 | 2 |
| Gabon | 1 | 0 | 1 |
| Ghana | 1 | 0 | 1 |
| Guyana | 0 | 1 | 1 |
| Croatia | 0 | 1 | 1 |
| Jamaica | 4 | 5 | 9 |
| Kenya | 4 | 9 | 13 |
| Moldova | 1 | 0 | 1 |
| Malta | 0 | 1 | 1 |
| Mali | 0 | 1 | 1 |
| Nigeria | 26 | 8 | 34 |
| Nepal | 18 | 10 | 28 |
| Rwanda | 1 | 2 | 3 |
| Saudi Arabia | 15 | 1 | 16 |
| St. Lucia | 48 | 81 | 129 |
| Togo | 2 | 2 | 4 |
| Turkey | 2 | 0 | 2 |
| Turkmenistan | 0 | 1 | 1 |
| Uganda | 2 | 4 | 6 |
| Unknown | 0 | 2 | 2 |
| Foreign Totals | | | |
| | 175 | 209 | 384 |
| Out-of-State Totals | | | |
| | 680 | 1,007 | 1,687 |
| Louisiana Totals | | | |
| | 1,142 | 1,994 | 3,136 |
| Institution Totals | | | |
| | 1,997 | 3,210 | 5,207 |

Source: Statewide Student Profile System

**Enrollment by State
Fall 2011**

| State | Gender | | Totals |
|---------------------------|--------------|--------------|--------------|
| | Male | Female | |
| Alabama | 32 | 19 | 51 |
| Alaska | 2 | 3 | 5 |
| Arizona | 4 | 6 | 10 |
| Arkansas | 26 | 36 | 62 |
| California | 87 | 168 | 255 |
| Colorado | 2 | 8 | 10 |
| Connecticut | 1 | 1 | 2 |
| District of Colombia | 1 | 2 | 3 |
| Delaware | 3 | 2 | 5 |
| Florida | 45 | 34 | 79 |
| Georgia | 45 | 47 | 92 |
| Hawaii | 1 | 0 | 1 |
| Iowa | 0 | 1 | 1 |
| Illinois | 47 | 77 | 124 |
| Indiana | 14 | 12 | 26 |
| Kansas | 7 | 3 | 10 |
| Kentucky | 1 | 3 | 4 |
| Massachusetts | 0 | 2 | 2 |
| Maryland | 17 | 16 | 33 |
| Michigan | 22 | 28 | 50 |
| Minnesota | 2 | 5 | 7 |
| Missouri | 21 | 24 | 45 |
| Mississippi | 21 | 30 | 51 |
| North Carolina | 3 | 8 | 11 |
| North Dakota | 0 | 1 | 1 |
| Nebraska | 0 | 1 | 1 |
| New Hampshire | 0 | 1 | 1 |
| New Jersey | 3 | 3 | 6 |
| New Mexico | 0 | 4 | 4 |
| Nevada | 10 | 19 | 29 |
| New York | 14 | 8 | 22 |
| Ohio | 4 | 26 | 30 |
| Oklahoma | 7 | 8 | 15 |
| Oregon | 3 | 10 | 13 |
| Pennsylvania | 3 | 8 | 11 |
| South Carolina | 4 | 4 | 8 |
| Tennessee | 6 | 13 | 19 |
| Texas | 204 | 336 | 540 |
| Utah | 0 | 1 | 1 |
| Virginia | 10 | 7 | 17 |
| Washington | 3 | 10 | 13 |
| Wisconsin | 5 | 11 | 16 |
| West Virginia | 0 | 1 | 1 |
| | | | |
| Out-of-State Totals | 680 | 1,007 | 1,687 |
| Louisiana Totals | 1,142 | 1,994 | 3,136 |
| Foreign Totals | 175 | 209 | 384 |
| Institution Totals | 1,997 | 3,210 | 5,207 |

Source: Statewide Student Profile System

Headcount Enrollment by Parish

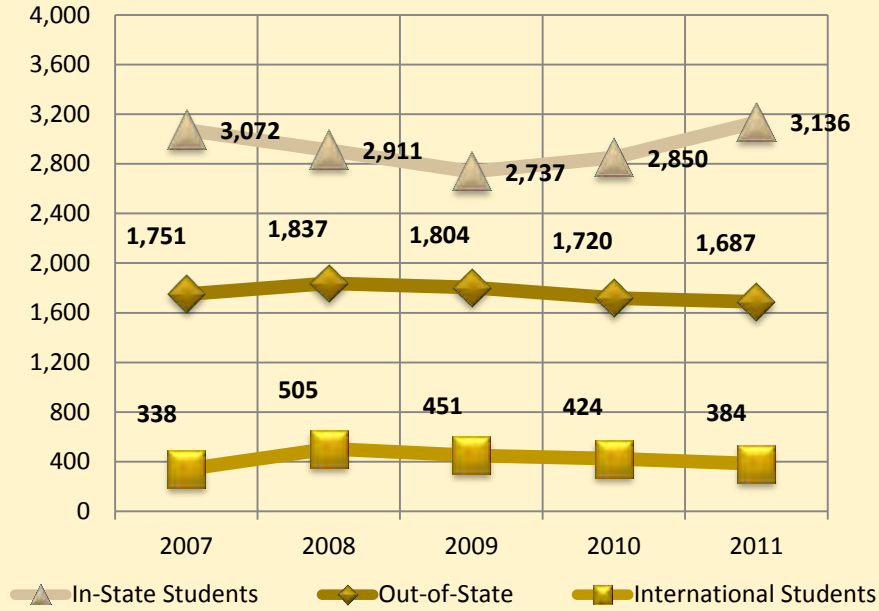
| Parish | Fall '07 | Fall '08 | Fall '09 | Fall '10 | Fall '11 |
|------------------|----------|----------|----------|----------|----------|
| Acadia | 14 | 11 | 8 | 8 | 7 |
| Allen | 9 | 6 | 5 | 5 | 5 |
| Ascension | 11 | 7 | 6 | 6 | 6 |
| Assumption | 8 | 10 | 7 | 5 | 4 |
| Avoyelles | 13 | 13 | 9 | 8 | 5 |
| Beauregard | 7 | 8 | 6 | 8 | 6 |
| Bienville | 122 | 130 | 143 | 133 | 126 |
| Bossier | 57 | 53 | 45 | 45 | 40 |
| Caddo | 264 | 288 | 294 | 337 | 385 |
| Calcasieu | 22 | 21 | 28 | 26 | 29 |
| Caldwell | 3 | 7 | 7 | 7 | 7 |
| Catahoula | 10 | 8 | 6 | 9 | 12 |
| Claiborne | 75 | 59 | 62 | 53 | 66 |
| Concordia | 37 | 34 | 30 | 31 | 33 |
| De Soto | 46 | 36 | 35 | 44 | 36 |
| East Baton Rouge | 61 | 58 | 48 | 41 | 46 |
| East Carroll | 72 | 58 | 45 | 38 | 46 |
| East Feliciana | 12 | 11 | 6 | 3 | 4 |
| Evangeline | 10 | 12 | 9 | 5 | 7 |
| Franklin | 37 | 32 | 38 | 38 | 36 |
| Grant | 3 | 2 | 1 | 2 | 2 |
| Iberia | 11 | 10 | 15 | 15 | 19 |
| Iberville | 8 | 11 | 13 | 12 | 12 |
| Jackson | 103 | 104 | 102 | 119 | 138 |
| Jefferson | 62 | 51 | 45 | 46 | 38 |
| Jefferson Davis | 11 | 10 | 11 | 12 | 7 |
| Lafayette | 27 | 25 | 28 | 29 | 36 |
| Lafourche | 2 | 4 | 3 | 3 | 5 |
| La Salle | 5 | 3 | 2 | 3 | 3 |
| Lincoln | 641 | 531 | 509 | 589 | 730 |
| Livingston | 1 | 0 | 0 | 0 | 0 |
| Madison | 68 | 79 | 78 | 79 | 84 |
| Morehouse | 87 | 113 | 84 | 93 | 95 |
| Natchitoches | 18 | 21 | 20 | 21 | 20 |
| Orleans | 134 | 111 | 108 | 96 | 106 |
| Ouachita | 474 | 444 | 385 | 384 | 411 |
| Plaquemines | 3 | 6 | 5 | 5 | 5 |
| Ponte Coupee | 2 | 1 | 1 | 2 | 5 |
| Rapides | 62 | 80 | 75 | 79 | 74 |
| Red River | 1 | 5 | 3 | 3 | 7 |
| Richland | 49 | 38 | 29 | 33 | 45 |
| Sabine | 5 | 7 | 6 | 5 | 5 |
| St. Bernard | 2 | 3 | 2 | 2 | 3 |

| Headcount Enrollment by Parish | | | | | |
|--------------------------------|--------------|--------------|--------------|--------------|--------------|
| Parish | Fall '07 | Fall '08 | Fall '09 | Fall '10 | Fall '11 |
| St. Charles | 7 | 6 | 9 | 9 | 10 |
| St. Helena | 1 | 2 | 3 | 2 | 1 |
| St. James | 3 | 2 | 3 | 4 | 3 |
| St. John | 21 | 18 | 17 | 15 | 18 |
| St. Landry | 40 | 32 | 24 | 23 | 19 |
| St. Martin | 7 | 6 | 7 | 6 | 4 |
| St. Mary | 10 | 12 | 8 | 11 | 9 |
| St. Tammany | 12 | 15 | 14 | 11 | 12 |
| Tangipahoa | 21 | 22 | 19 | 19 | 18 |
| Tensas | 17 | 19 | 24 | 14 | 13 |
| Terrebonne | 10 | 12 | 12 | 14 | 9 |
| Union | 70 | 59 | 55 | 58 | 78 |
| Vermillion | 8 | 5 | 5 | 3 | 3 |
| Vernon | 7 | 8 | 9 | 10 | 10 |
| Washington | 24 | 27 | 26 | 30 | 28 |
| Webster | 98 | 105 | 98 | 94 | 102 |
| West Baton Rouge | 9 | 6 | 7 | 6 | 7 |
| West Carroll | 8 | 11 | 8 | 8 | 7 |
| West Feliciana | 2 | 1 | 4 | 2 | 4 |
| Winn | 28 | 22 | 23 | 29 | 25 |
| | | | | | |
| LOUISIANA TOTAL | 3,072 | 2,911 | 2,737 | 2,850 | 3,136 |
| OUT-OF-STATE TOTAL | 1751 | 1837 | 1804 | 1720 | 1,687 |
| FOREIGN TOTAL | 338 | 505 | 451 | 424 | 384 |
| TOTAL STUDENTS | 5161 | 5253 | 4992 | 4994 | 5,207 |
| | | | | | |

Source: Statewide Student Profile System

Headcount Enrollment

Headcount Enrollment by Student Residency



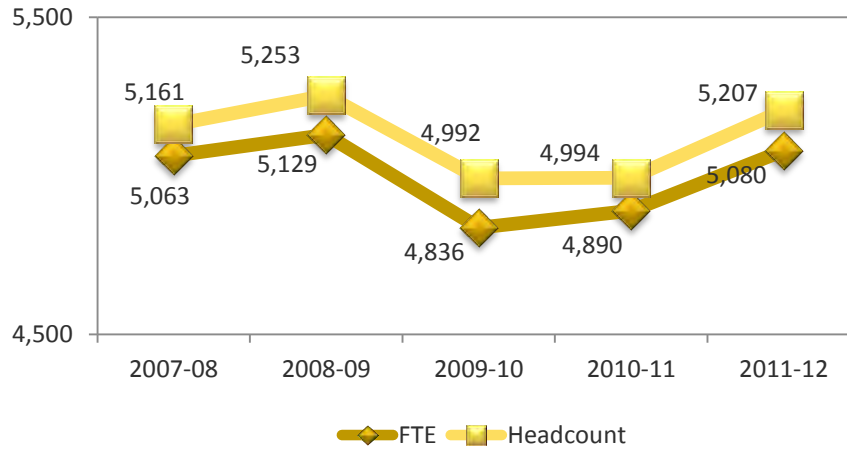
Headcount Enrollment by Residency

| | 2007 | 2008 | 2009 | 2010 | 2011 |
|------------------------|--------------|--------------|--------------|--------------|--------------|
| In-State Students | 3,072 | 2,911 | 2,737 | 2,850 | 3,136 |
| Out-of-State | 1,751 | 1,837 | 1,804 | 1,720 | 1,687 |
| International Students | 338 | 505 | 451 | 424 | 384 |
| TOTALS | 5,161 | 5,253 | 4,992 | 4,994 | 5,207 |

Source: Statewide Student Profile System

Enrollment Trends by Level

Comparison of FTE and Headcount Enrollment

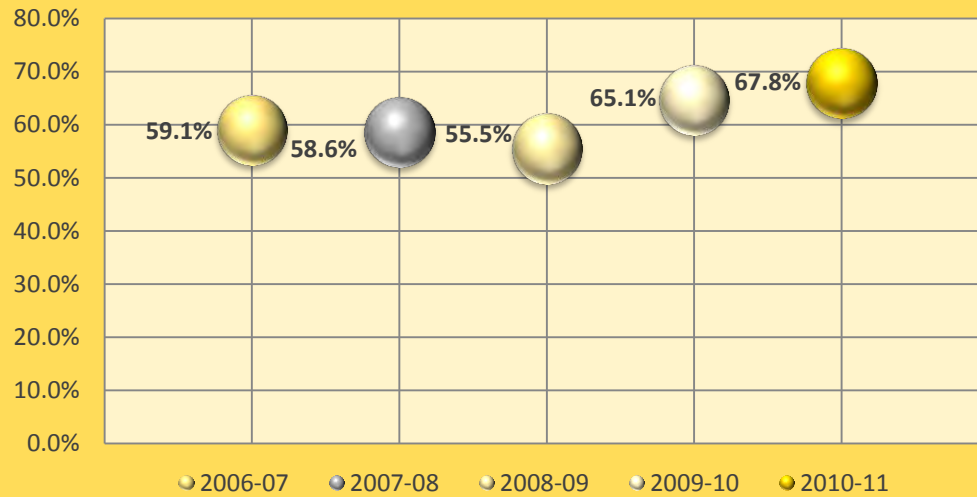


Full-time Equivalent Enrollment (FTE) by Level

| LEVEL | Fall Semester | | | | |
|------------------|----------------|----------------|----------------|----------------|----------------|
| | 2007 | 2008 | 2009 | 2010 | 2011 |
| Undergraduate | 4,732.1 | 4,751.5 | 4,440.6 | 4,377.9 | 4,448.3 |
| Graduate | 330.8 | 377.3 | 395.5 | 512.5 | 631.6 |
| Total FTE | 5,062.9 | 5,128.8 | 4,836.1 | 4,890.4 | 5,080.0 |

Source: Statewide Student Profile System

First-to-Second Year Retention Rates



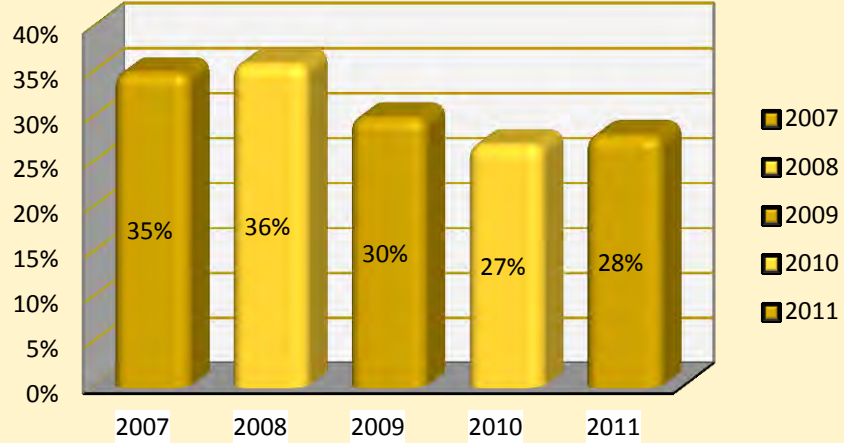
First-to-Second Year Retention Rates

| Semester | First-time Full-time Freshmen Entering | Number Returning | Retention Rate |
|------------------------|--|------------------|----------------|
| Fall 2006 to Fall 2007 | 1122 | 663 | 59.1% |
| Fall 2007 to Fall 2008 | 1184 | 694 | 58.6% |
| Fall 2008 to Fall 2009 | 1203 | 668 | 55.5% |
| Fall 2009 to Fall 2010 | 910 | 592 | 65.1% |
| Fall 2010 to Fall 2011 | 706 | 479 | 67.8% |

Source: Board of Regents Retention Data

GRADUATION RATES

Six-Year Graduation Rates



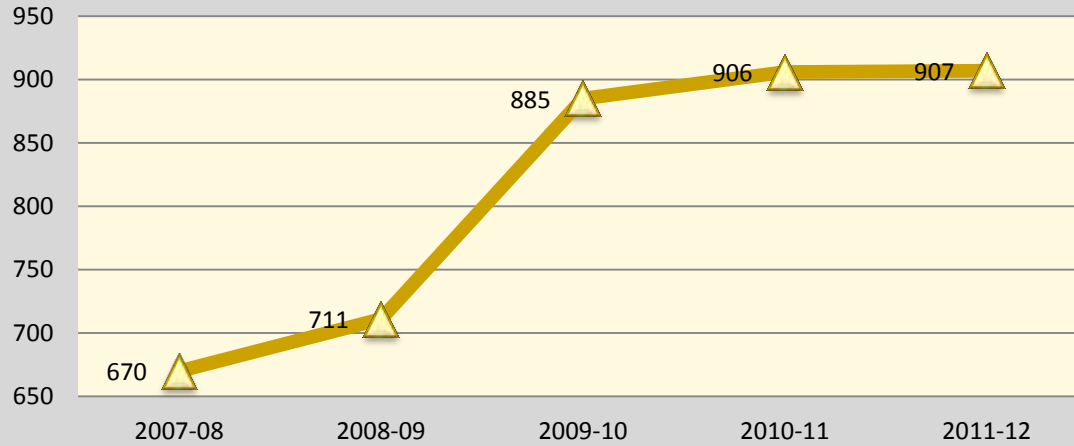
Six-Year Graduation Rates

| Entering Term | First-time Full-time Cohort | Number Graduating | Graduation Rate |
|---------------|-----------------------------|-------------------|-----------------|
| 2001 | 886 | 313 | 35.33% |
| 2002 | 851 | 304 | 35.72% |
| 2003 | 1,027 | 307 | 29.89% |
| 2004 | 1,169 | 319 | 27.29% |
| 2005 | 1,131 | 315 | 27.85% |

Source: Board of Regents Graduation Data

DEGREES AWARDED

Total Degrees Awarded



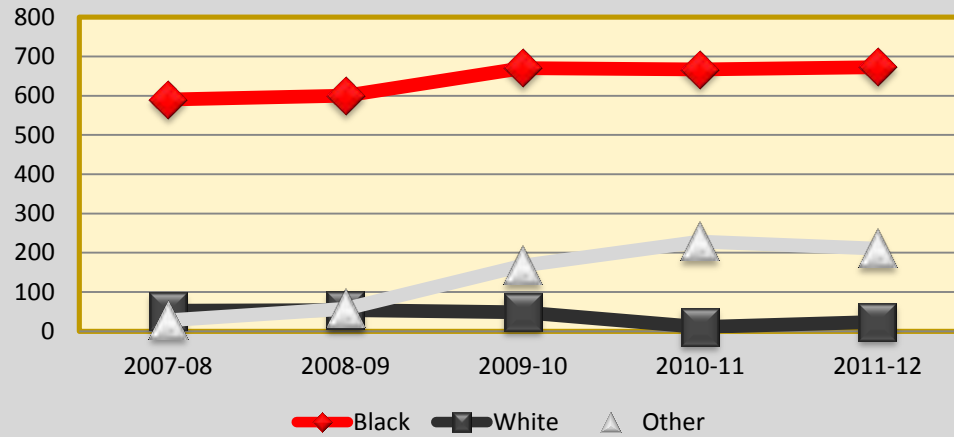
Degrees Awarded by Level and Gender

| Level | Gender | 2007-08 | 2008-09 | 2009-10 | 2010-11 | 2011-12 |
|----------------------|----------|---------|---------|---------|---------|---------|
| Undergraduate | Female | 342 | 388 | 496 | 466 | 445 |
| | Male | 232 | 199 | 252 | 264 | 257 |
| | Subtotal | 574 | 587 | 748 | 730 | 702 |
| Graduate | Female | 67 | 94 | 98 | 126 | 141 |
| | Male | 29 | 30 | 39 | 50 | 64 |
| | Subtotal | 96 | 124 | 137 | 176 | 205 |
| TOTALS | Female | 409 | 482 | 594 | 592 | 586 |
| | Male | 261 | 229 | 291 | 314 | 321 |
| | Total | 670 | 711 | 885 | 906 | 907 |

Source: IPEDS Completers

DEGREES AWARDED by RACE

Degrees Awarded by Race



Degrees Awarded by Race

| Race | 2007-08 | 2008-09 | 2009-10 | 2010-11 | 2011-12 |
|--------------|------------|------------|------------|------------|------------|
| Black | 590 | 600 | 670 | 667 | 673 |
| White | 52 | 54 | 48 | 11 | 24 |
| Other | 28 | 57 | 167 | 228 | 210 |
| Total | 670 | 711 | 885 | 906 | 907 |

Source: Statewide Student Profile System

Degrees Awarded by Level & Program

| DEGREES | DESCRIPTION | 2007-2008 | 2008-2009 | 2009-2010 | 2010-2011 | 2011-2012 |
|--|-------------------------------------|-----------|-----------|-----------|-----------|-----------|
| Certificate | Paralegal Studies | 1 | 0 | 0 | 0 | 0 |
| Total Certificate Degrees Awarded | | 1 | 0 | 0 | 0 | 0 |
| Associate | Child Development | 10 | 13 | 23 | 28 | 16 |
| Associate | Criminal Justice | 20 | 15 | 10 | 6 | 0 |
| Associate | Paralegal Studies | 6 | 5 | 2 | 1 | 0 |
| Total Associate Degrees Awarded | | 36 | 33 | 35 | 35 | 16 |
| Bachelors | Accounting | 14 | 22 | 42 | 35 | 23 |
| Bachelors | Applied Music - Performance | 1 | 4 | 7 | 4 | 4 |
| Bachelors | Art | 5 | 3 | 2 | 5 | 5 |
| Bachelors | Art Education | 1 | 0 | 0 | 0 | 0 |
| Bachelors | Automotive Engineering Technology | 0 | 0 | 0 | 0 | 0 |
| Bachelors | Biology | 33 | 23 | 30 | 53 | 50 |
| Bachelors | Biology Teacher Education | 0 | 0 | 1 | 0 | 0 |
| Bachelors | Business and Office Education | 0 | 0 | 0 | 0 | 0 |
| Bachelors | Chemistry | 9 | 14 | 6 | 7 | 7 |
| Bachelors | Communication and Theatre Education | 0 | 0 | 0 | 0 | 0 |
| Bachelors | Computer Information Systems | 44 | 33 | 41 | 47 | 29 |
| Bachelors | Computer Science | 6 | 4 | 3 | 11 | 9 |
| Bachelors | Construction Engineering Technology | 0 | 0 | 0 | 0 | 0 |
| Bachelors | Criminal Justice | 57 | 70 | 81 | 100 | 111 |
| Bachelors | Drafting Design Technology | 14 | 5 | 7 | 8 | 5 |
| Bachelors | Early Childhood Ed GR PK-3 | 3 | 4 | 2 | 4 | 6 |
| Bachelors | Economics | 2 | 3 | 9 | 9 | 7 |
| Bachelors | Electronic Engineering Technology | 12 | 11 | 14 | 14 | 8 |

Degrees Awarded by Level & Program

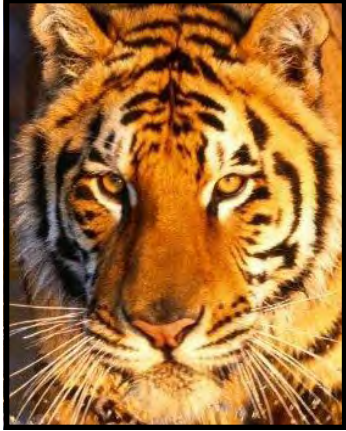
| DEGREES | DESCRIPTION | 2007-2008 | 2008-2009 | 2009-2010 | 2010-2011 | 2011-2012 |
|-----------|---------------------------------------|-----------|-----------|-----------|-----------|-----------|
| Bachelors | Elementary Education GR 1-6 | 9 | 7 | 9 | 3 | 1 |
| Bachelors | Engineering Technology, General | 0 | 0 | 0 | 2 | 8 |
| Bachelors | English Education | 0 | 2 | 1 | 0 | 1 |
| Bachelors | English, General | 5 | 3 | 9 | 5 | 3 |
| Bachelors | French | 0 | 1 | 1 | 1 | 0 |
| Bachelors | History | 8 | 5 | 6 | 10 | 5 |
| Bachelors | Home Economics Education | 0 | 0 | 0 | 0 | 0 |
| Bachelors | Hotel/Restaurant Management | 6 | 15 | 22 | 21 | 1 |
| Bachelors | Jr. High/Middle School Ed & Teaching | 0 | 0 | 0 | 0 | 1 |
| Bachelors | Kinesiology (Health and Phys. Ed) | 25 | 23 | 31 | 35 | 30 |
| Bachelors | Leisure Studies | 24 | 15 | 30 | 28 | 25 |
| Bachelors | Management | 42 | 40 | 55 | 56 | 66 |
| Bachelors | Manufacturing Engineering Tech. | 1 | 0 | 0 | 0 | 0 |
| Bachelors | Marketing | 24 | 24 | 40 | 37 | 29 |
| Bachelors | Mass Communication | 37 | 29 | 49 | 30 | 34 |
| Bachelors | Mathematics | 1 | 1 | 2 | 0 | 4 |
| Bachelors | Mathematics Teacher Education | 0 | 0 | 0 | 0 | 1 |
| Bachelors | Music Education | 5 | 0 | 3 | 3 | 0 |
| Bachelors | Nursing | 64 | 102 | 102 | 72 | 103 |
| Bachelors | Paralegal Studies | 8 | 6 | 7 | 4 | 5 |
| Bachelors | Physics | 2 | 1 | 2 | 1 | 2 |
| Bachelors | Political Science | 10 | 13 | 14 | 7 | 8 |
| Bachelors | Political Science (Pre-Law) | 2 | 2 | 3 | 3 | 8 |
| Bachelors | Psychology, General | 20 | 23 | 35 | 33 | 24 |
| Bachelors | Public Administration | 0 | 0 | 0 | 0 | 0 |
| Bachelors | Secondary Ed. - Science & Mathematics | 2 | 0 | 0 | 0 | 0 |

Degrees Awarded by Level & Program

| DEGREES | DESCRIPTION | 2007-2008 | 2008-2009 | 2009-2010 | 2010-2011 | 2011-2012 |
|---------------------------------------|--------------------------------------|------------|------------|------------|------------|------------|
| Bachelors | Social Science Education | 2 | 0 | 1 | 0 | 0 |
| Bachelors | Social Studies Education GR 6-12 | 0 | 0 | 0 | 1 | 0 |
| Bachelors | Social Work | 22 | 24 | 28 | 28 | 44 |
| Bachelors | Sociology | 10 | 11 | 8 | 10 | 9 |
| Bachelors | Special Education | 3 | 2 | 0 | 1 | 1 |
| Bachelors | Spanish | 0 | 2 | 2 | 0 | 0 |
| Bachelors | Speech Pathology | 2 | 2 | 0 | 0 | 0 |
| Bachelors | Theatre | 2 | 5 | 8 | 7 | 9 |
| Total Bachelor Degrees Awarded | | 537 | 554 | 713 | 695 | 686 |
| Masters | Criminal Justice | 12 | 26 | 31 | 37 | 56 |
| Masters | Curriculum and Instruction | 0 | 0 | 0 | 7 | 4 |
| Masters | Developmental Education | 0 | 5 | 5 | 6 | 9 |
| Masters | Educational Leadership | 0 | 0 | 9 | 12 | 3 |
| Masters | Education Multilevels K-12 | 0 | 0 | 0 | 2 | 0 |
| Masters | Elementary Education, General | 0 | 0 | 0 | 0 | 0 |
| Masters | Elementary/Early Childhood Education | 1 | 0 | 0 | 0 | 0 |
| Masters | Liberal Arts | 0 | 0 | 0 | 0 | 0 |
| Masters | Mass Communication | 7 | 8 | 3 | 2 | 10 |
| Masters | Natural Sciences Education | 0 | 0 | 0 | 0 | 0 |
| Masters | Nursing-Family Nurse Practitioner | 12 | 14 | 15 | 14 | 17 |
| Masters | Nursing-Nurse Educator | 1 | 3 | 0 | 7 | 1 |
| Masters | Pediatric Nursing | 0 | 0 | 0 | 5 | 0 |
| Masters | Registered Nurse | 0 | 0 | 0 | 0 | 1 |
| Masters | Public Administration | 22 | 12 | 11 | 14 | 11 |
| Masters | Social Science Education | 5 | 7 | 9 | 11 | 11 |

Degrees Awarded by Level & Program

| DEGREES | DESCRIPTION | 2007-2008 | 2008-2009 | 2009-2010 | 2010-2011 | 2011-2012 |
|---|------------------------------------|------------|------------|------------|------------|------------|
| Masters | Social Work | 17 | 25 | 23 | 26 | 45 |
| Masters | Special Education | 0 | 0 | 0 | 2 | 0 |
| Masters | Sports Administration | 16 | 15 | 27 | 29 | 29 |
| Total Masters Degrees Awarded | | 93 | 115 | 133 | 174 | 197 |
| | | | | | | |
| Post-Masters Cert | Nursing, Family Nurse Practitioner | 0 | 0 | 0 | 0 | 2 |
| Total Post-Masters Degrees Awarded | | 0 | 0 | 0 | 0 | 2 |
| | | | | | | |
| Doctoral | Curriculum & Instruction | 1 | 1 | 0 | 0 | 1 |
| Doctoral | Educational Leadership | 0 | 0 | 0 | 0 | 0 |
| Doctoral | Developmental Education | 2 | 8 | 4 | 2 | 5 |
| Total Doctoral Degrees Awarded | | 3 | 9 | 4 | 2 | 6 |
| University Total | | 670 | 711 | 885 | 906 | 907 |
| <i>Source: Statewide Student Profile System</i> | | | | | | |



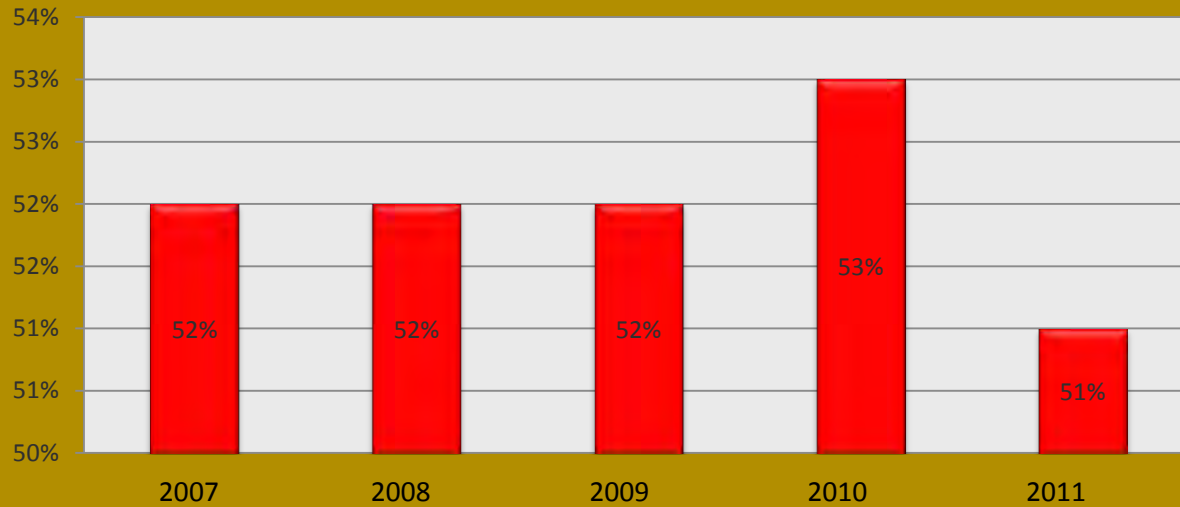
GSU

Section III

RESOURCES

- A. Employees
- B. Financial
- C. Facilities

Percentage Male Full-time Instructional Faculty

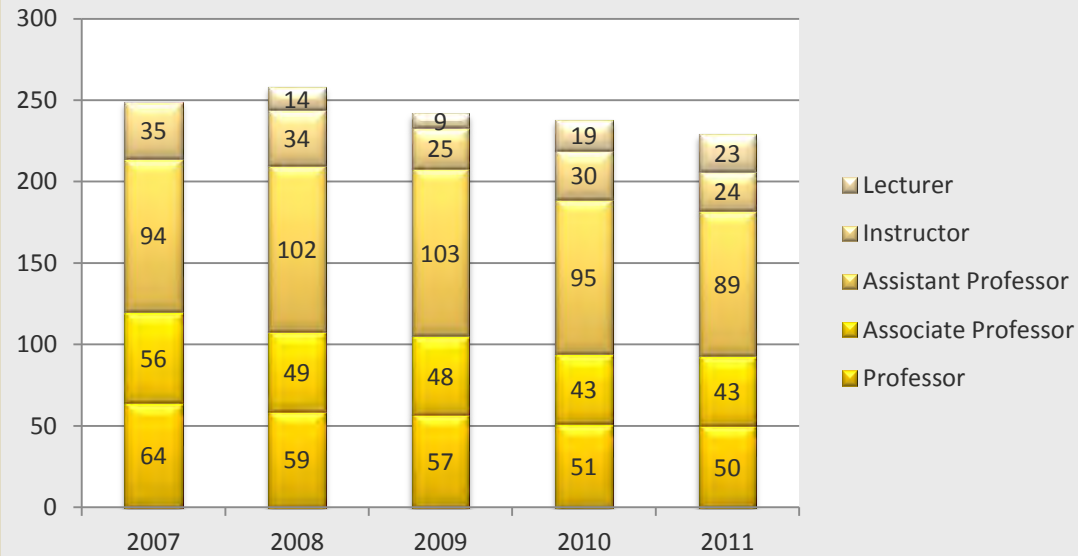


Full-time Instructional Faculty by Gender

| Gender | Fall Semesters | | | | |
|---------------|----------------|------------|------------|------------|------------|
| | 2007 | 2008 | 2009 | 2010 | 2011 |
| Male | 130 | 134 | 135 | 126 | 116 |
| Female | 119 | 125 | 107 | 112 | 113 |
| TOTAL | 249 | 259 | 242 | 238 | 229 |
| % Male | 52% | 52% | 52% | 53% | 51% |

Source: University Data System

Faculty Count by Rank



Full-time Instructional Faculty by Rank

| | Fall Semesters | | | | |
|---------------------|----------------|------------|------------|------------|------------|
| | 2007 | 2008 | 2009 | 2010 | 2011 |
| Professor | 64 | 59 | 57 | 51 | 50 |
| Associate Professor | 56 | 49 | 48 | 43 | 43 |
| Assistant Professor | 94 | 102 | 103 | 95 | 89 |
| Instructor | 35 | 34 | 25 | 30 | 24 |
| Lecturer | | 14 | 9 | 19 | 23 |
| Total | 249 | 258 | 242 | 238 | 229 |

Source: University Data System

Average Salaries of Full-Time Faculty for All Ranks

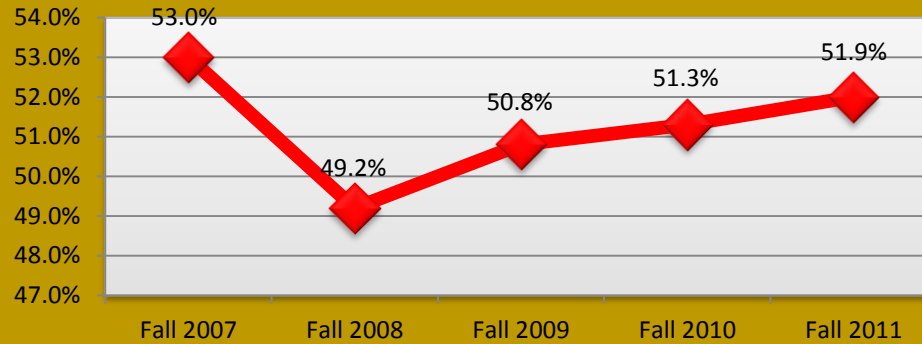


Average Salary of Full-time Faculty by Rank

| Rank | Fall Semesters | | | | |
|---------------------|----------------|--------------|--------------|--------------|--------------|
| | 2007 | 2008 | 2009 | 2010 | 2011 |
| Professor | \$ 70,817.00 | \$ 70,979.00 | \$ 71,193.00 | \$ 70,832.00 | \$ 69,193.00 |
| Associate Professor | \$ 59,321.00 | \$ 59,726.00 | \$ 62,891.00 | \$ 63,065.00 | \$ 59,159.00 |
| Assistant Professor | \$ 51,969.00 | \$ 51,241.00 | \$ 53,700.00 | \$ 54,428.00 | \$ 54,363.00 |
| Instructor | \$ 39,955.00 | \$ 40,804.00 | \$ 40,889.00 | \$ 40,205.00 | \$ 38,893.00 |
| Lecturer | | \$ 44,595.00 | \$ 44,591.00 | \$ 48,631.00 | \$ 42,556.00 |
| All Ranks | \$ 56,778.00 | \$ 55,630.00 | \$ 57,981.00 | \$ 57,248.00 | \$ 55,695.00 |

Source: University Data System

Percentage Tenured Full-Time Instructional Faculty



Number and Percentage of Full-Time Instructional Faculty
by Tenure Status

| Semester | Tenured | On Tenure Track | Not Eligible | Total | Percent Tenured |
|-----------|---------|-----------------|--------------|-------|-----------------|
| Fall 2007 | 132 | 74 | 43 | 249 | 53.0% |
| Fall 2008 | 127 | 71 | 60 | 258 | 49.2% |
| Fall 2009 | 123 | 75 | 44 | 242 | 50.8% |
| Fall 2010 | 122 | 66 | 50 | 238 | 51.3% |
| Fall 2011 | 119 | 57 | 53 | 229 | 51.9% |

Source: University Data System

Full-time Staff by Ethnicity

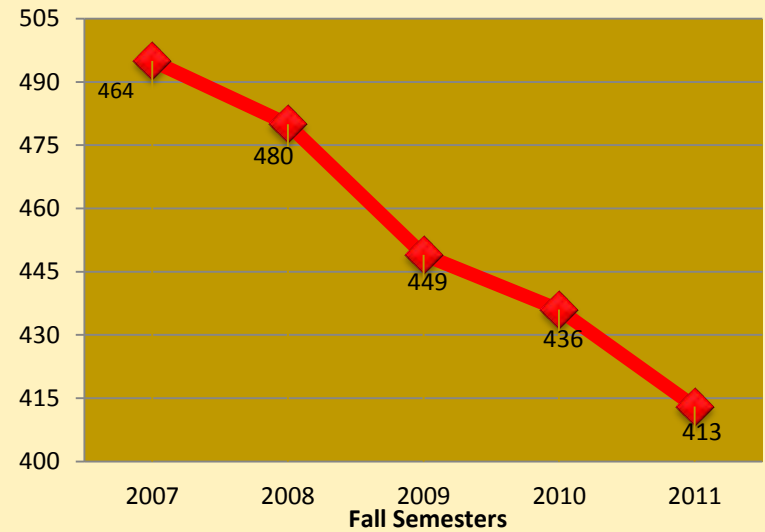
| Ethnicity | Fall Semester | | | | |
|--------------------------------|---------------|------------|------------|------------|------------|
| | 2007 | 2008 | 2009 | 2010 | 2011 |
| American Indian/Alaskan Native | 0 | 0 | 0 | 0 | 0 |
| Asian/Pacific Islander | 9 | 9 | 8 | 7 | 6 |
| Black | 461 | 449 | 418 | 403 | 385 |
| Hispanic | 4 | 2 | 2 | 2 | 2 |
| White | 17 | 17 | 19 | 22 | 15 |
| Non-Resident Alien | 3 | 2 | 1 | 0 | 4 |
| Unknown | 1 | 1 | 1 | 2 | 1 |
| TOTAL | 495 | 480 | 449 | 436 | 413 |

Full-time Staff by Gender

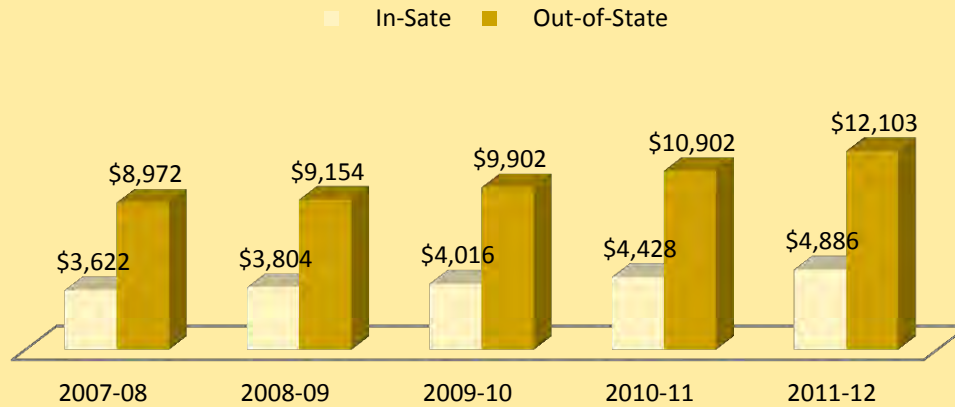
| Fall Semester | Male | Female | Total |
|---------------|------|--------|-------|
| Fall 2007 | 163 | 332 | 495 |
| Fall 2008 | 167 | 313 | 480 |
| Fall 2009 | 161 | 288 | 449 |
| Fall 2010 | 154 | 282 | 436 |
| Fall 2011 | 145 | 268 | 413 |

Source: University Data System

Full-time Staff



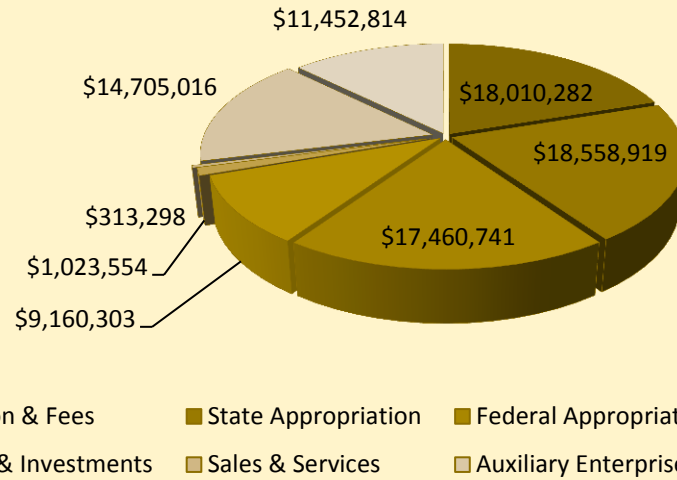
Tuition and Mandatory Fees for In-State and Out-of-State Students



| Student Costs | | | | | |
|-----------------------------------|----------|----------|----------|-----------|-----------|
| Student Fees | 2007-08 | 2008-09 | 2009-10 | 2010-11 | 2011-12 |
| Tuition and Mandatory Fees | | | | | |
| In-State | \$ 3,622 | \$ 3,804 | \$ 4,016 | \$ 4,428 | \$ 4,886 |
| Out-of-State | \$ 8,972 | \$ 9,154 | \$ 9,902 | \$ 10,902 | \$ 12,103 |
| Room and Board Charges | | | | | |
| Room | \$ 2,600 | \$ 2,600 | \$ 2,600 | \$ 2,800 | \$ 2,803 |
| Board | \$ 2,442 | \$ 2,622 | \$ 2,712 | \$ 2,794 | \$ 2,930 |

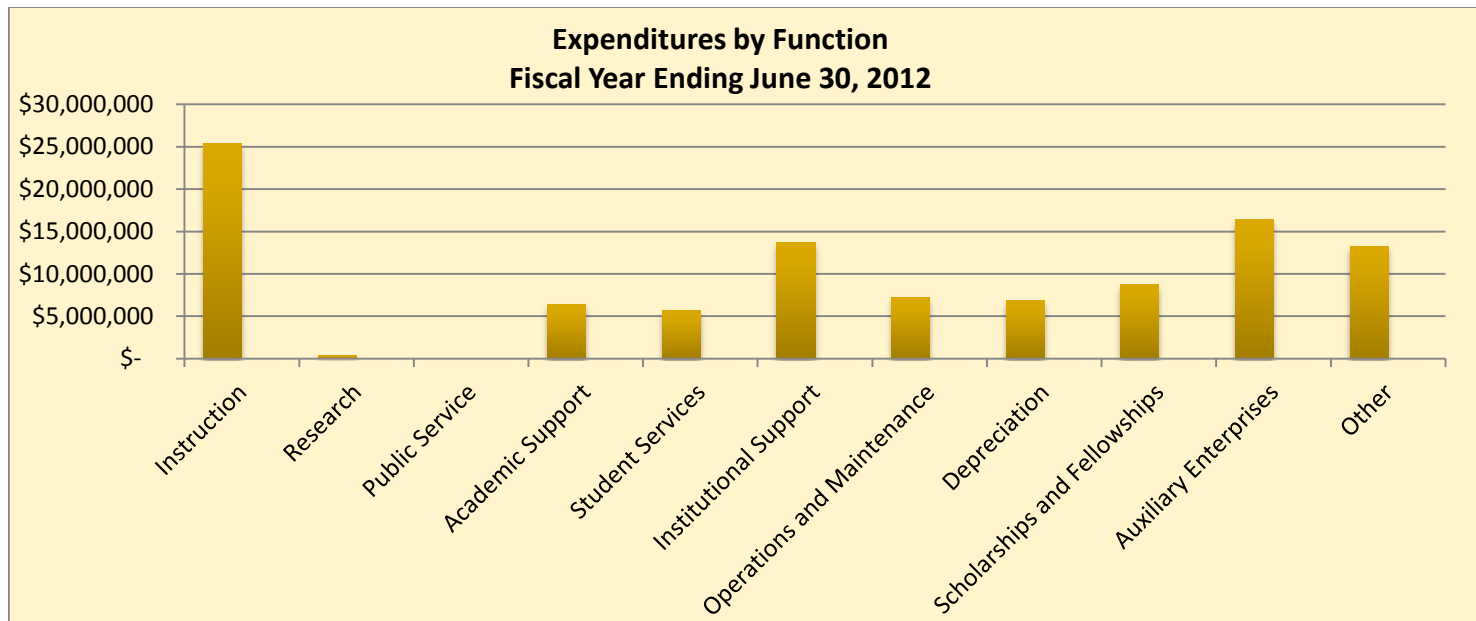
Source: University Data System

**Revenue by Source
Fiscal Year Ending in June 30, 2012**



Revenues by Source

| Function | Amount | Percent |
|-----------------------|-------------------|-------------|
| Tuition & Fees | \$ 18,010,282 | 20% |
| State Appropriation | \$ 18,558,919 | 20% |
| Federal Appropriation | \$ 17,460,741 | 19% |
| Grant & Contracts | \$ 9,160,303 | 10% |
| Gifts & Investments | \$ 1,023,554 | 1% |
| Sales & Services | \$ 313,298 | < 1% |
| Auxiliary Enterprise | \$ 14,705,016 | 16% |
| Other | \$ 11,452,814 | 13% |
| Total | 90,684,927 | 100% |



| Expenditures by Function | | |
|---------------------------------|-----------------------|-------------|
| Function | Amount | Percent |
| Instruction | \$ 25,361,472 | 24% |
| Research | \$ 412,145 | 0.40% |
| Public Service | \$ 59,774 | 0.06% |
| Academic Support | \$ 6,427,596 | 6% |
| Student Services | \$ 5,671,071 | 5% |
| Institutional Support | \$ 13,757,430 | 13% |
| Operations and Maintenance | \$ 7,267,062 | 7% |
| Depreciation | \$ 6,814,116 | 7% |
| Scholarships and Fellowships | \$ 8,751,249 | 8% |
| Auxiliary Enterprises | \$ 16,419,879 | 16% |
| Other | \$ 13,285,263 | 13% |
| Total | \$ 104,227,057 | 100% |

| Assignable Area by Room Use Fall 2011 | | | |
|--|--------------|---------|------------------|
| Facilities Use Code | Facility | ASF | ASF/FTE |
| 100 | Classrooms | 119,050 | 26.9 |
| 200 | Laboratory | 153,092 | 34.6 |
| 300 | Office | 194,004 | 43.9 |
| 400 | Study | 42,544 | 9.6 |
| 500 | Special Use | 177,380 | 40.1 |
| 600 | General Use | 132,055 | 29.9 |
| 700 | Supporting | 40,283 | 9.1 |
| 800 | Medical Care | 2,101 | 0.5 |
| 900 | Residential | 182,742 | 41.4 |
| 000 | Unclassified | 6,267 | 1.4 |
| Less Other | Residential | 866,776 | 196.1 |
| Total Facilities Assignable Square Feet (ASF)/FTE | | | 238 |
| Fall 2009 Full-time Equivalent (FTE) Enrollment | | | 4,419 |
| Total Assignable Area | | | 1,049,518 |

**Source Board of Regents website*



www.gram.edu