



THE BAYOU CLASSIC SUITE EXPERIENCE

The Grambling University Foundation invites you to experience the 2018 Bayou Classic from a private luxury suite at the Mercedes-Benz Superdome. A luxury suite will provide the perfect setting for entertaining alumni & friends, family and clients. You and your guests can experience the natural game atmosphere of the Bayou Classic in a luxurious setting.



300 Level Luxury Suite Experience | \$5,000

This luxury suite is located on the lower suite level, known as the 300 level. The suite features first-class amenities that include: premium in-suite catering options, HDTV's, upscale furnishing, wet bar and comfortable seating. Suite rental includes 20 tickets.

400 Level Luxury Suite Experience | \$10,000

This luxury suite is located on the upper suite level, known as the 400 level. The suite features first-class amenities that include: premium in-suite catering options, HDTV's, upscale furnishing, wet bar and comfortable seating. Suite rental includes 40 tickets.



Individual Suite Experience | \$300

Individuals can have a suite experience on the upper suite level, known as the 400 level.

The Individual Suite Experience includes: one (1) game ticket and first-class amenities such as premium in-suite catering, HDTV's, upscale furnishing, and comfortable seating.

Bunker Club Pass and Plaza Level Seating | \$130

Enjoy the extravagant amenities of the Bunker Club - i.e. upscale, New Orleans inspired food stations, a cash bar, luxury seats and flat-screen TVs throughout the suite. Tiger fans can also experience the live game action from the Plaza Level.

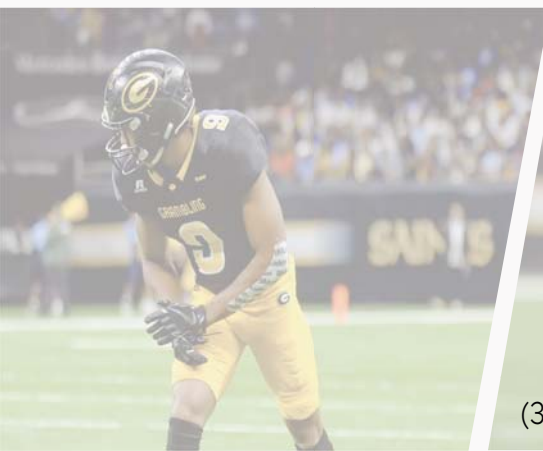


Bunker Club Pass | \$100

Tiger fans can delight in upscale, New Orleans inspired food stations, a cash bar, luxury seats and flat-screen TVs throughout the suite.

Bunker Club Pass includes ground level admission only. A game ticket must be purchased separately.

To purchase your Bayou Classic Experience, visit <https://secure.qgiv.com/for/gast/>



GSU Office of Advancement
(318) 274-2217 | advancementservice@gram.edu

