

DEPARTMENT ID: 19A Higher Education
AGENCY ID: 19A-620-Board of Supervisors for the University of Louisiana System
DEPARTMENT ID: 19A Higher Education



Grambling State University
OPERATIONAL PLAN
FY 2023-2024

OPERATIONAL PLAN FORM PROGRAM DESCRIPTION

PROGRAM NAME: 19A-623 Grambling State University

PROGRAM AUTHORIZATION:

Founded in 1901 as a private school to educate African American citizens of North Central Louisiana. Act 161 of House Bill 227, July 20th, 1928. Act 33 of House Bill 278, July 4th, 1946. Act 178 of House Bill 35, July 12th, 1974. The state constitution of 1974, Article VII

PROGRAM MISSION:

Grambling State University is a comprehensive, historically-black, public institution that offers a broad spectrum of undergraduate and graduate programs of study. Through its undergraduate major courses of study, which are under girded by a traditional liberal arts program, and through its graduate school, which has a decidedly professional focus, the university embraces its founding principle of educational opportunity. With a commitment to the education of minorities in American society, the university seeks to reflect in all of its programs the diversity present in the world. The university advances the study and preservation of African American history, art and culture.

Grambling State University is a community of learners who strive for excellence in their pursuit of knowledge and who seek to contribute to their respective major academic disciplines. The university prepares its graduates to compete and succeed in careers related to its programs of study, to contribute to the advancement of knowledge, and to lead productive lives as informed citizens in a democratic society. The university provides its students a living and learning environment which nurtures their development for leadership in academics, athletics, campus governance, and in their future pursuits. The university affords each student the opportunity to pursue any program of study provided that the student makes reasonable progress and demonstrates that progress in standard ways. Grambling fosters in its students a commitment to service and to the improvement in the quality of life for all persons.

The university expects that all persons who matriculate and who are employed at Grambling will reflect through their study and work that the University is indeed a place where all persons are valued, "where everybody is somebody."

PROGRAM GOAL(S):

1. Increase opportunities for student access and success.
2. Ensure quality and accountability.
3. Enhance services to the community and state.

PROGRAM ACTIVITY:

Grambling State University is managed through the following areas: Office of the President, Division for Academic Affairs, Division for Finance, Division for Student Affairs, Division for Institutional Advancement.

DEPARTMEN 19A-Higher Education
 AGENCY ID: 19A-620-Board of Supervisors for the University of Louisiana System
 PROGRAM IE 19A-623 Grambling State University
 PROGRAM ACTIVITY:

1. Increase the percentage of first-time in college, full-time, degree-seeking students retained to the second fall at the same institution of initial enrollment by 2 percentage point from the Fall 2020 cohort (to Fall 2021) baseline level of 69.34% to 71.34% by Fall 2026 (retention of Fall 2025 cohort).

Children's Budget Link:
 Human Resource Policies Beneficial to Women and Families Link:
 Other Links (TANF, Tobacco Settlement, Workforce Development Commission, or Other):

Explanatory Note:

LaPAS PI CODE	L E V E L	PERFORMANCE INDICATOR NAME	PERFORMANCE INDICATOR VALUES						
			YEAREND PERFORMANCE STANDARD FY 2021-2022	ACTUAL YEAREND PERFORMANCE FY 2021-2022	PERFORMANCE STANDARD AS INITIALLY APPROPRIATED FY 2022-2023	EXISTING PERFORMANCE STANDARD FY 2022-2023	PERFORMANCE AT CONTINUATION BUDGET LEVEL FY 2023-2024	PERFORMANCE AT EXECUTIVE BUDGET LEVEL FY 2023-2024	PERFORMANCE STANDARD AS INITIALLY APPROPRIATED FY 2023-2024
K		Percentage of first-time in college, full-time, degree-seeking students retained to the second Fall at the same institution of initial enrollment.	74	71.76	73.3	73.3	75		
S		Percentage point change from baseline in the percentage of first-time in college, full-time, degree-seeking students retained to the second Fall at the same institution of initial enrollment.	1.6	-1.54	0.89	0.89	1		

- 1
- 2
- 3
- 4
- 5
- 6
- 7
- 8

1. Increase the percentage of first-time in college, full-time, degree-seeking students retained to the third Fall at the same four-year institution of initial enrollment by 3 percentage points from the Fall 2019 cohort (to Fall 2021) baseline level of 61.8% to 64.8 % by Fall 2026 (retention of Fall 2024 cohort).

Children's Budget Link:
 Human Resource Policies Beneficial to Women and Families Link:
 Other Links (TANF, Tobacco Settlement, Workforce Development Commission, or Other):

Explanatory Note:

LaPAS PI CODE	L E V E L	PERFORMANCE INDICATOR NAME	PERFORMANCE INDICATOR VALUES						
			YEAREND PERFORMANCE STANDARD FY 2021-2022	ACTUAL YEAREND PERFORMANCE FY 2021-2022	PERFORMANCE STANDARD AS INITIALLY APPROPRIATED FY 2022-2023	EXISTING PERFORMANCE STANDARD FY 2022-2023	PERFORMANCE AT CONTINUATION BUDGET LEVEL FY 2023-2024	PERFORMANCE AT EXECUTIVE BUDGET LEVEL FY 2023-2024	PERFORMANCE STANDARD AS INITIALLY APPROPRIATED FY 2023-2024
K		Percentage of first-time in college, full-time, degree-seeking students retained to the second Fall at the same institution of initial enrollment.	56	55.2	57	57	58		
S		Percentage point change from baseline in the percentage of first-time in college, full-time, degree-seeking students retained to the second Fall at the same institution of initial enrollment.	1	0.2	2	2	2		

¹ Fall 2020 Matched to Fall 2022 to get the 1st to 3rd Retention Rate
² Then Subtracted the Percentage Rate from Baseline Data
³
⁴
⁵
⁶
⁷
⁸

DEPARTMENT 19A-Higher Education
 AGENCY ID: 19A-620 Board of Supervisors for the Louisiana
 PROGRAM ID: 19A-623 Grambling State University
 PROGRAM ACTIVITY:

1. Increase the institutional statewide graduation rate (defined as a student completing an award within 150% of "normal time") from the baseline rate (Fall 2014 cohort for all institutions) of 41.19 to 42% by AY2025-2026 (Fall 2019 cohort).

State Outcome Goals Link: Youth Education and Diversified Economic Growth – Grambling State University offers a broad spectrum of undergraduate and graduate programs of study to a community of learners

Children's Budget Link: Not applicable

Human Resource Policies Beneficial to Women and Families Link: Not applicable

Other Links (TANF, Tobacco Settlement, Workforce Development Commission, or Other): Board of Regents Master Plan for Higher Education

Explanatory Note:

LaPAS PI CODE	L E V E L	PERFORMANCE INDICATOR NAME	PERFORMANCE INDICATOR VALUES						
			YEAREND PERFORMANCE STANDARD FY 2021-2022	ACTUAL YEAREND PERFORMANCE FY 2021-2022	PERFORMANCE STANDARD AS INITIALLY APPROPRIATED FY 2022-2023	EXISTING PERFORMANCE STANDARD FY 2022-2023	PERFORMANCE AT CONTINUATION BUDGET LEVEL FY 2023-2024	PERFORMANCE AT EXECUTIVE BUDGET LEVEL FY 2023-2024	PERFORMANCE STANDARD AS INITIALLY APPROPRIATED FY 2023-2024
	K	Percentage of students enrolled at a Four Year College identified in a first-time, full-time, degree-seeking cohort, graduating within 150% of "normal" time of degree completion at any Louisiana public postsecondary institution.	40	41.19	39	39	37		
	S	Number of students enrolled at a Grambling State University identified in a first-time, full-time, degree-seeking cohort, graduating within 150% of "normal" time of degree completion.	270	166	330	330	318		

- 1
- 2
- 3
- 4
- 5
- 6
- 7
- 8

1. Increase the total number of Baccalaureate Degree completes in a given academic year from the baseline year number of 524 in 2022-21 to 535 in AY 2025-26. Students may only be counted once per award level.

State Outcome Goals Link: Youth Education and Diversified Economic Growth – Grambling State University offers a broad spectrum of undergraduate and graduate programs of study to a community of Children's Budget Link: Not Applicable
 Human Resource Policies Beneficial to Women and Families Link: Not Applicable
 Other Links (TANF, Tobacco Settlement, Workforce Development Commission, or Other): Board of Regents Master Plan for Higher Education

Explanatory Note:

LaPAS PI CODE	L E V E L	PERFORMANCE INDICATOR NAME	PERFORMANCE INDICATOR VALUES					PERFORMANCE AT CONTINUATION BUDGET LEVEL FY 2023-2024	PERFORMANCE AT EXECUTIVE BUDGET LEVEL FY 2023-2024	PERFORMANCE STANDARD AS INITIALLY APPROPRIATED FY 2023-2024
			YEAREND PERFORMANCE STANDARD FY 2021-2022	ACTUAL YEAREND PERFORMANCE FY 2021-2022	PERFORMANCE STANDARD AS INITIALLY APPROPRIATED FY 2022-2023	EXISTING PERFORMANCE STANDARD FY 2022-2023	PERFORMANCE AT CONTINUATION BUDGET LEVEL FY 2023-2024			
	K	Number of Completers at Baccalaureate Degree completers	520	524	565	565	570			
	S	Percentage change in the number of completers from the baseline year	-2.07	-1.31	7.82	7.82	8.77			

- 1
- 2
- 3
- 4
- 5
- 6
- 7
- 8

**OPERATIONAL PLAN FORM
OPERATIONAL PLAN ADDENDA**

ORGANIZATION AND PROGRAM STRUCTURE CHARTS CHECKLIST:

Organization Chart Attached: X

Program and Activity Structure Chart Attached: _____

OTHER: List any other attachments to operational plan.

- 1.
- 2.
- 3.

CONTACT PERSON(S):

NAME: Dr. Shalena B. Johnson
TITLE: Director of Institutional Planning, Assessment & Effectiveness
TELEPHONE: 318-274-7720
FAX: 318-274-4265
E-MAIL: johnsons@gram.edu

NAME: Dr. Connie Walton
TITLE: Provost & VP of Academic Affairs
TELEPHONE: 318-274-6141
FAX:
E-MAIL: waltoncr@gram.edu

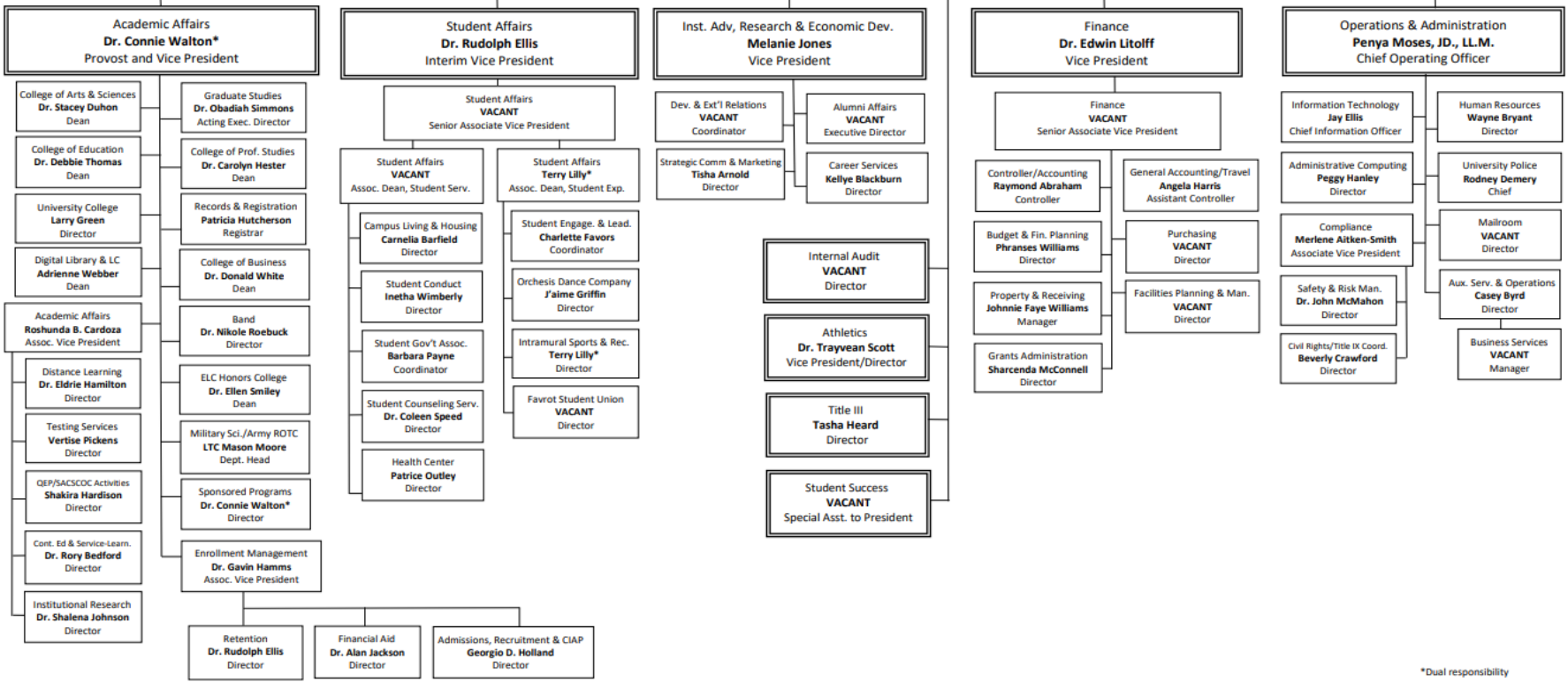
NAME:
TITLE:
TELEPHONE:
FAX:
E-MAIL:



ORGANIZATIONAL CHART
8/15/2022

University of Louisiana System Board of Supervisors

Richard J. Gallot, Jr. JD President



*Dual responsibility