



Tiger Tech Spotlight

KnowBe4

Coming soon! "Phish Alert" button
Why, When and How you should use (PAB)

The **"Phish Alert"** button (PAB) is a feature in Outlook that helps users to immediately report phishing emails to GSU ITC.

By reporting phishing emails, proper steps can be taken to block senders as well as remove the malicious messages from the inboxes of other affected employees. Once the email has been validated and proven to be safe it will be returned to your inbox.

WHY

Each member of our campus community has the responsibility to safeguard the University's data, network and other resources entrusted to us.

WHEN

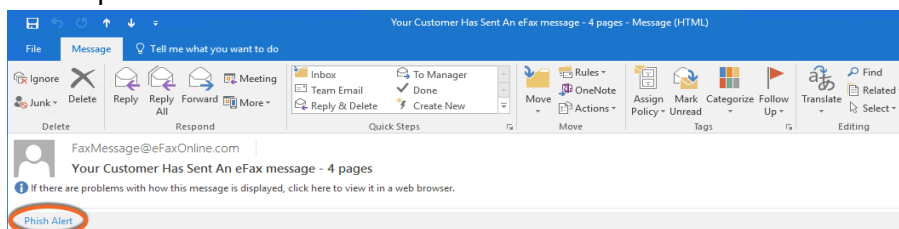
Click the PAB if you believe you have received a phishing email or any potentially dangerous email.

- [Click here for tips on when to use the PAB](#)

HOW

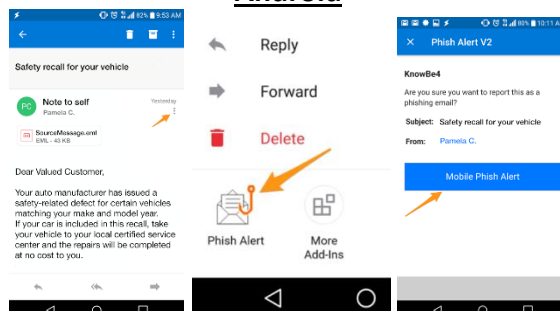
Click the **"Phish Alert V2"** button while the email is open.

- Desktop

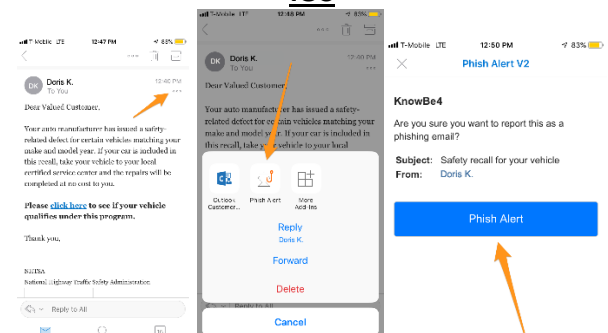


- Mobile

Android



IOS



[Click here for detailed mobile instructions](#)