



CAMPUS LIVING & HOUSING

LIVE ON CAMPUS

WHERE EVERYBODY IS SOMEBODY



Campus Living & Housing

Living in Tiger Land is an integral part of the University experience. There are five traditional style residence halls and nine apartment style housing options on the Grambling campus which house over 2,400 students each year. The smallest residence hall houses 37 students and the largest more than 250. Residence halls are grouped as follows:



Female Halls: Jewett, Hunter, Robinson, Truth, Bowen, Douglass. Bethune
Male Halls: Garner, Knott, Pinchback, Attucks, Wheatley, Tubman.
Co-Ed Halls: Jones, Holland, Adams, CEV, West Campus, Steeple's Glen

TIGER VILLAGE

JONES, TUBMAN, TRUTH



Each bedroom has the following:

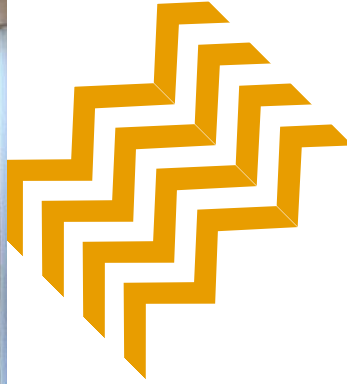
twin size bed
desk & chair
nightstand
dresser
closet
basic phone connection
cable connection
wireless internet connection
(Ethernet optional)

Each apartment style unit shares the following:

bathroom (shower/tub, toilet)
double sink area
kitchenette (cabinets, refrigerator,
sink)
living room (sofa, chair,
entertainment center, coffee table,
end table, basic phone service,
cable connection)

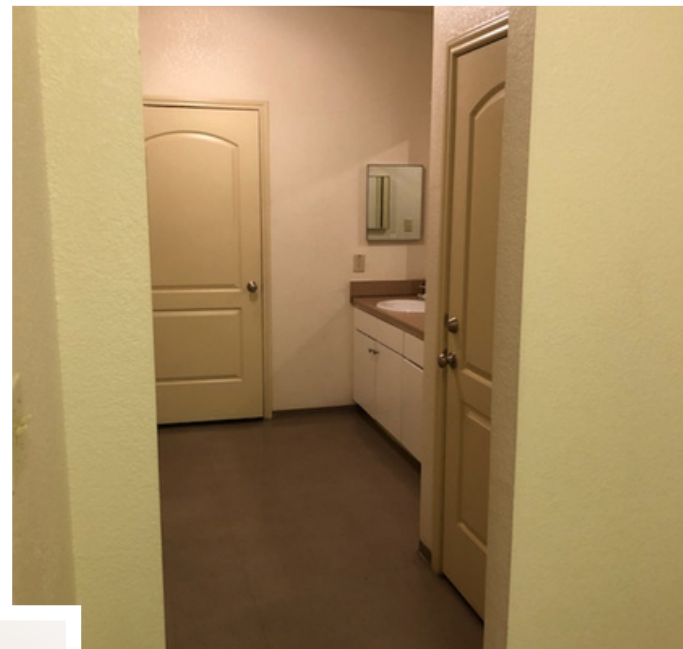
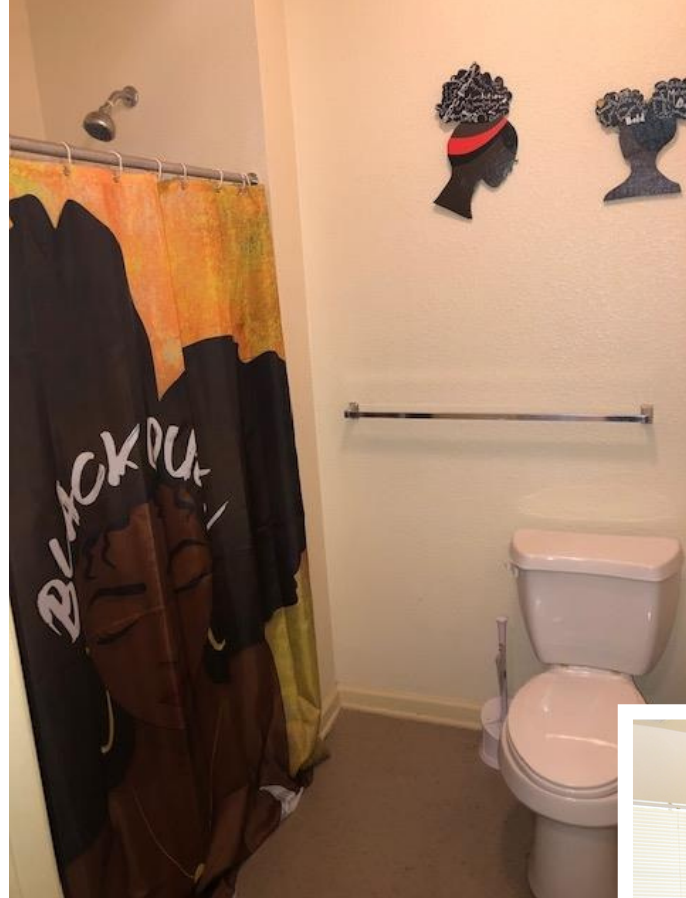
Continued.....

TIGER VILLAGE



Continued.....

**Friendships and Connections, Academic
Success, Student Development**



apartment style residence halls featuring 2 bedroom/1 bath and 4 bedroom/2 baths. Located on R.W.E. Jones Drive, these facilities are three-story buildings that house 94-190 students per building. These buildings are for upperclassmen only.

TIGER VILLAGE

KNOTT & BETHUNE

Each bedroom has the following for each resident:

TWIN SIZE BED
DESK & CHAIR
NIGHTSTAND
DRESSER
CLOSET
SINK

Roommates share the following:

CABLE CONNECTION
INTERNET CONNECTION
BASIC PHONE CONNECTION
BATHROOM (SHOWER/TUB, TOILET)

all male and female, double occupancy, traditional style residence halls. Located on Central Avenue and Younger Street near the Intramural Center, these facilities are three-story buildings that houses 192-216 students. There is no classification requirement for this assignment.





ADAMS & HOLLAND



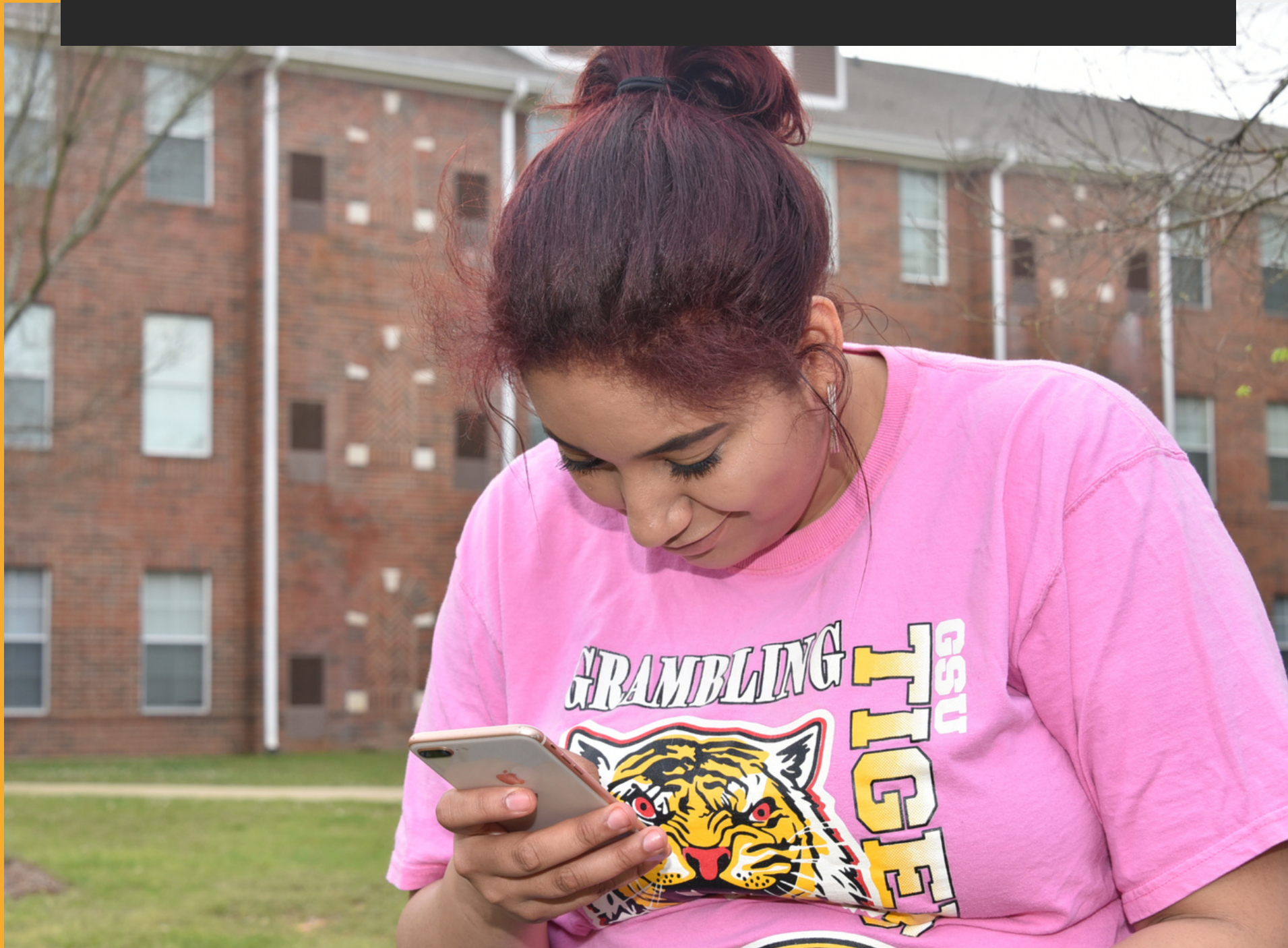
Each bedroom has the following:

- * twin size bed*
- * desk & chair*
- * nightstand*
- * dresser*
- * closet*
- * basic phone connection*
- * cable connection*
- * wireless internet connection (Ethernet optional)*

Each apartment style unit shares the following:

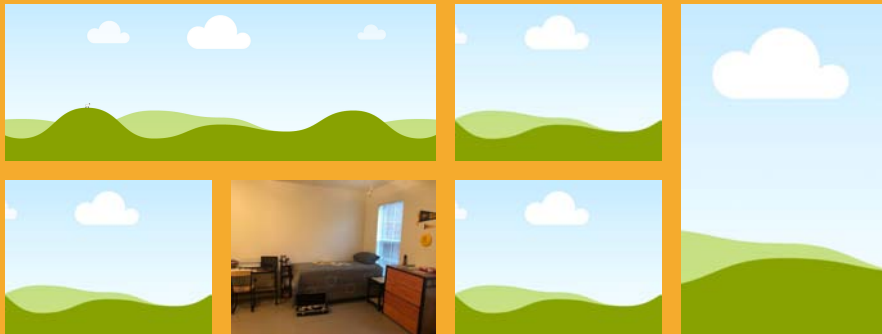
- * bathroom (shower/tub, toilet)*
- * double sink area*
- * kitchenette (cabinets, refrigerator, sink)*
- * living room (sofa, chair, entertainment center, coffee table, end table, basic phone service, cable connection)*

Apartment style residence halls featuring 2 bedroom/1bath and 4 bedroom/2 baths. Located on Younger Street and Hutchinson Street, these facilities are three-story buildings that house 85-180 students. These buildings are co-ed for freshmen & Upperclassmen .



DOUGLASS & WHEATLEY

All male and female double occupancy, traditional style residence halls, located on Sandle Street, these facilities are three-story buildings that house 248-274 students. These buildings are for freshmen only.



Each bedroom has the following for each resident:

- * twin size bed
- * desk & chair
- * nightstand
- * dresser
- * closet
- * sink

Roommates share the following:

- * cable connection
- * internet connection
- * basic phone connection
- * bathroom (shower/tub, toilet)



**A PLACE WE
CALL HOME!**



The reasons we love it

- * Bathroom located inside room.
- * Spacious
- * Live in community of freshmen students
- * AC/Heat controlled by the student

Live Challenged, Live Together , Live Supported



Freshmen Village

CRISPUS ATTUCKS & PINCHBACK

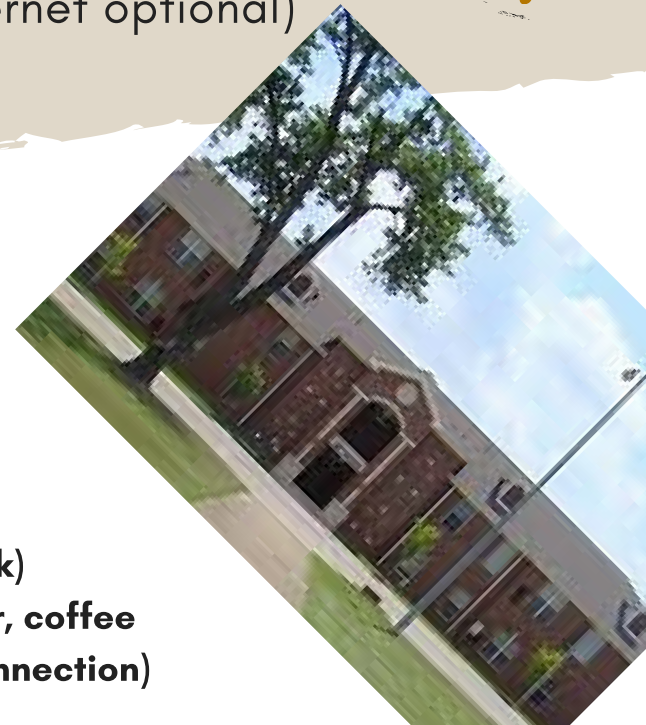
Each bedroom has the following:

- * twin size bed
- * desk & chair
- * nightstand
- * dresser
- * closet
- * sink
- * basic phone connection
- * cable connection
- * wireless internet connection (Ethernet optional)



Each apartment style unit shares the following:

- * bathroom (shower/tub, toilet)
- * kitchenette (cabinets, refrigerator, sink)
- * living room (sofa, chair, entertainment center, coffee table, end table, basic phone service, cable connection)



Traditional Halls

Hunter, Robinson, Jewett & Garner



- * Twin size bed
- * Wardrobe
- * Desk & Chair
- * Sink
- * Bathroom
- * Cable Connection
- * Wireless internet connection



WEST CAMPUS



- * Twin size bed
- * Wardrobe
- * Desk & Chair
- * Sink
- *Community Bathroom
- * Cable Connection
- * Wireless internet connection

STEEPLE'S GLEN

EACH BEDROOM HAS THE FOLLOWING:

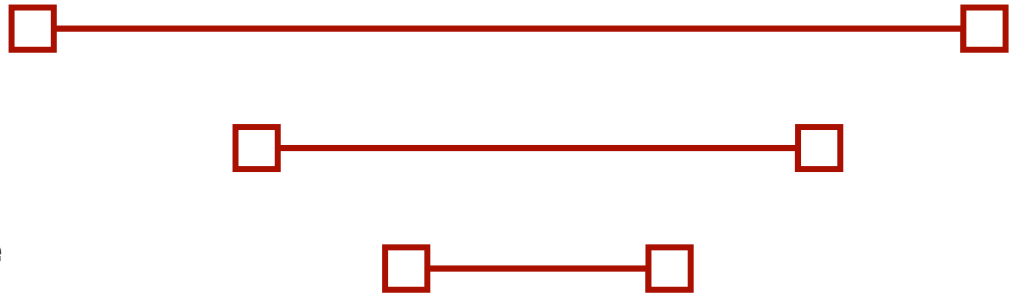
- * **TWIN SIZE BED**
- * **BATHROOM (SHOWER/TUB, TOILET)**
- * **DESK & CHAIR**
- * **NIGHTSTAND**
- * **DRESSER**
- * **CLOSET**
- * **BASIC PHONE CONNECTION**
- * **CABLE CONNECTION**
- * **WIRELESS INTERNET CONNECTION (ETHERNET OPTIONAL)**

Each apartment style unit shares the following:

- * **washer & dryer**
- * **kitchen (cabinets, refrigerator, sink, stove)**
- * **living room (sofa, chair, entertainment center, coffee table, end table, basic phone service, cable connection)**



co-ed, apartment style facility featuring four bedrooms only. This complex is located at the corner of Maxie Street and Central Avenue. These two-story complexes house 48 upperclassmen residents



ADDITIONAL ADVANTAGES



SHORTER COMMUTES



**ACCESS TO ACTIVITIES
AND SERVICES**



**FIRST STEP TO
INDEPENDENCE**

TIGER VILLAGE FLOOR PLANS



2 BEDROOM SUITE



4 BEDROOM SUITE



**DOUBLE
OCCUPANCY**